

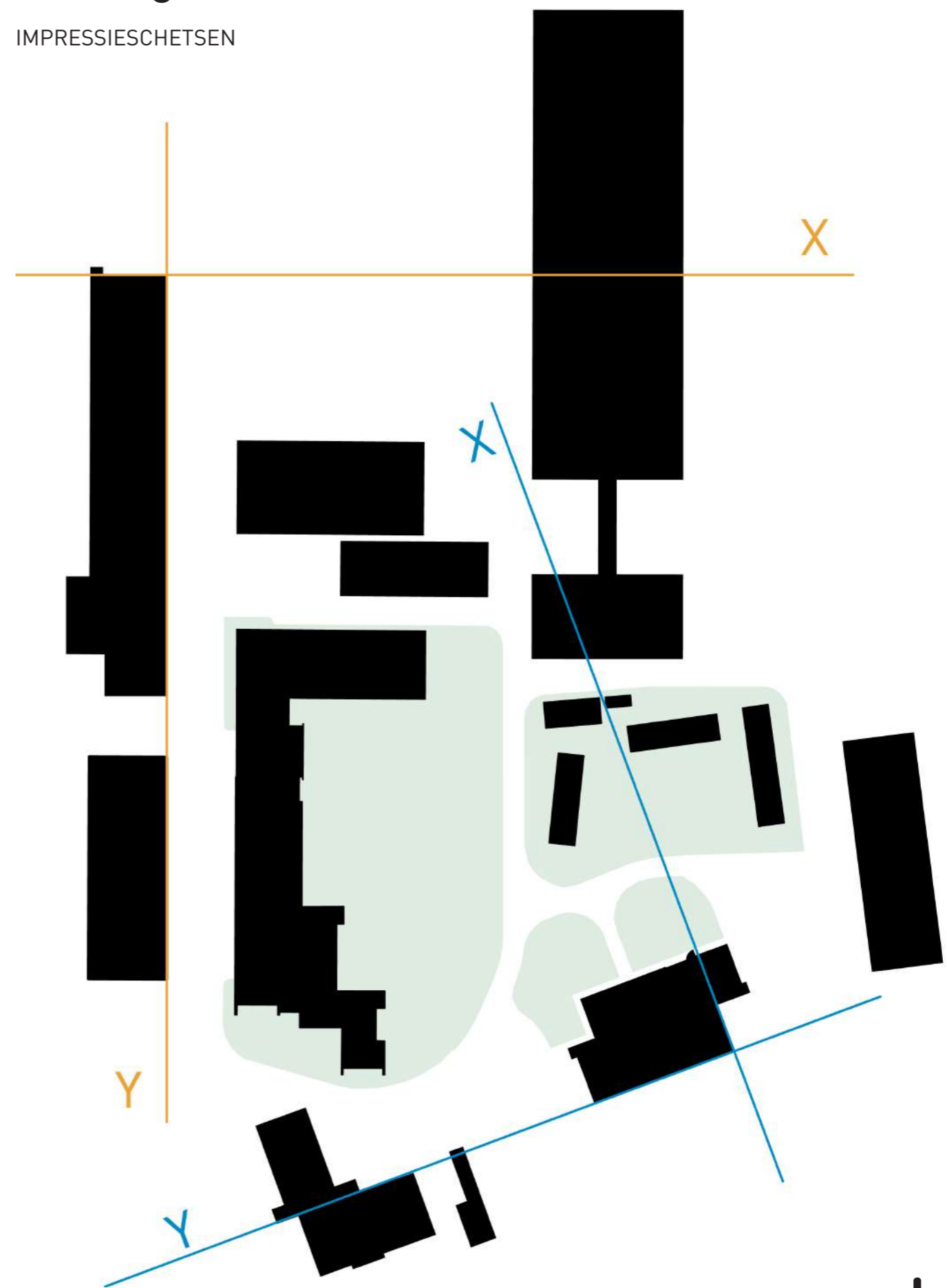
Nieuwbouw
kantoorgebouw
teeltgebonden
onderzoeks-
personeel
INAGRO



Concept

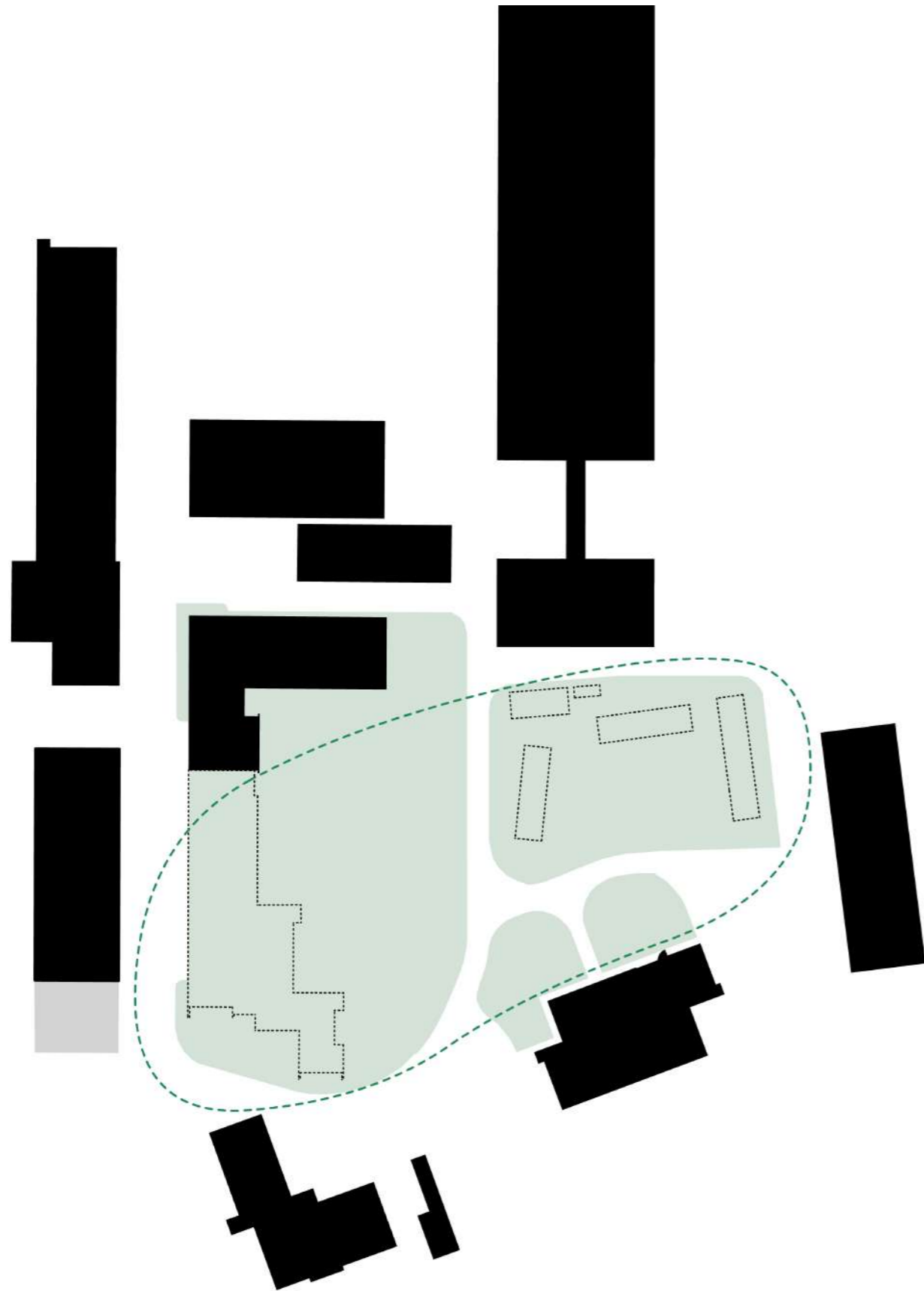
Setting

IMPRESSIESCHETSEN

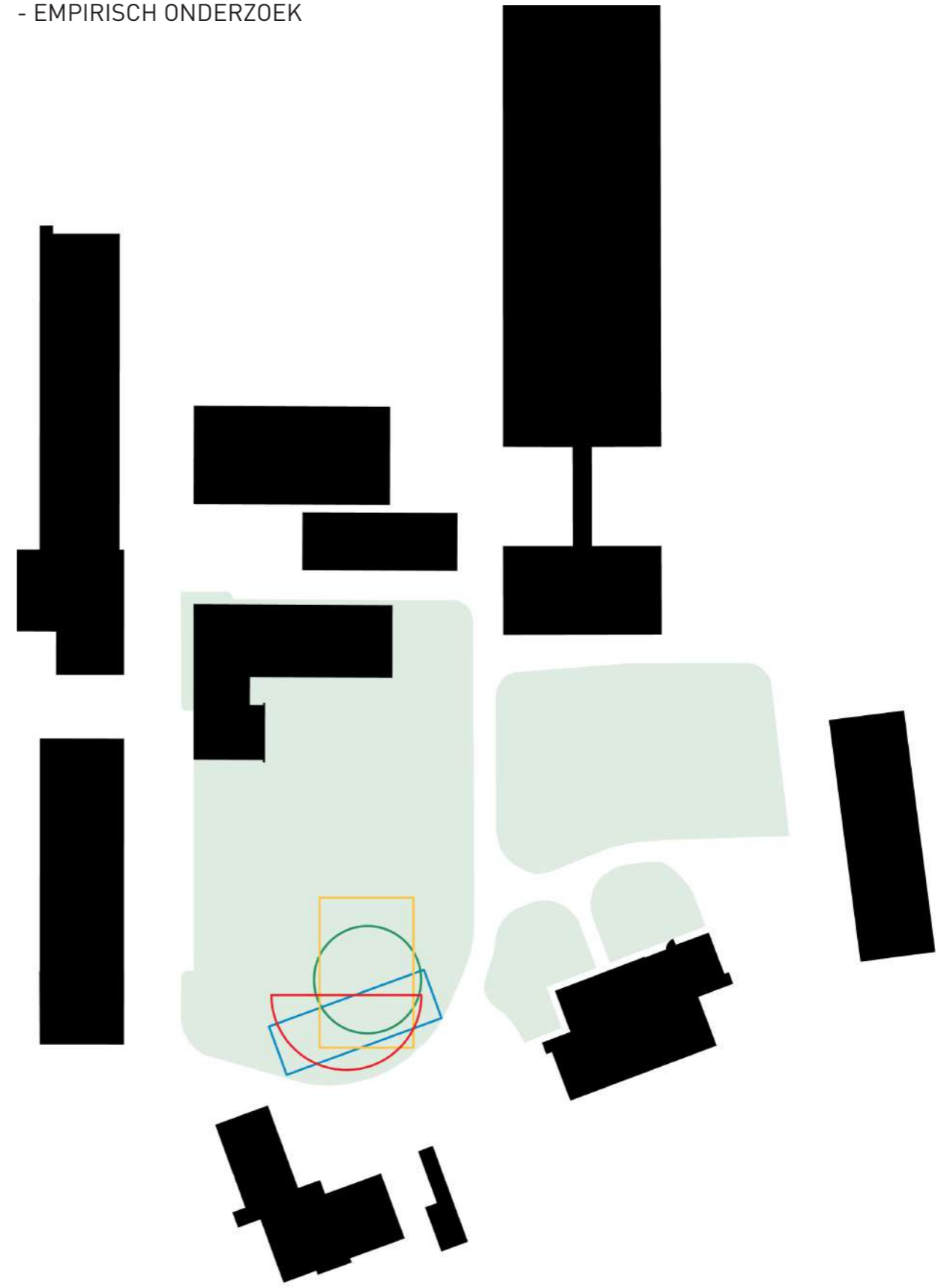


Kader Bepalen

'COMMON GROUND'



POSITIE, CONFIGURATIE & VOLUME
- EMPIRISCH ONDERZOEK

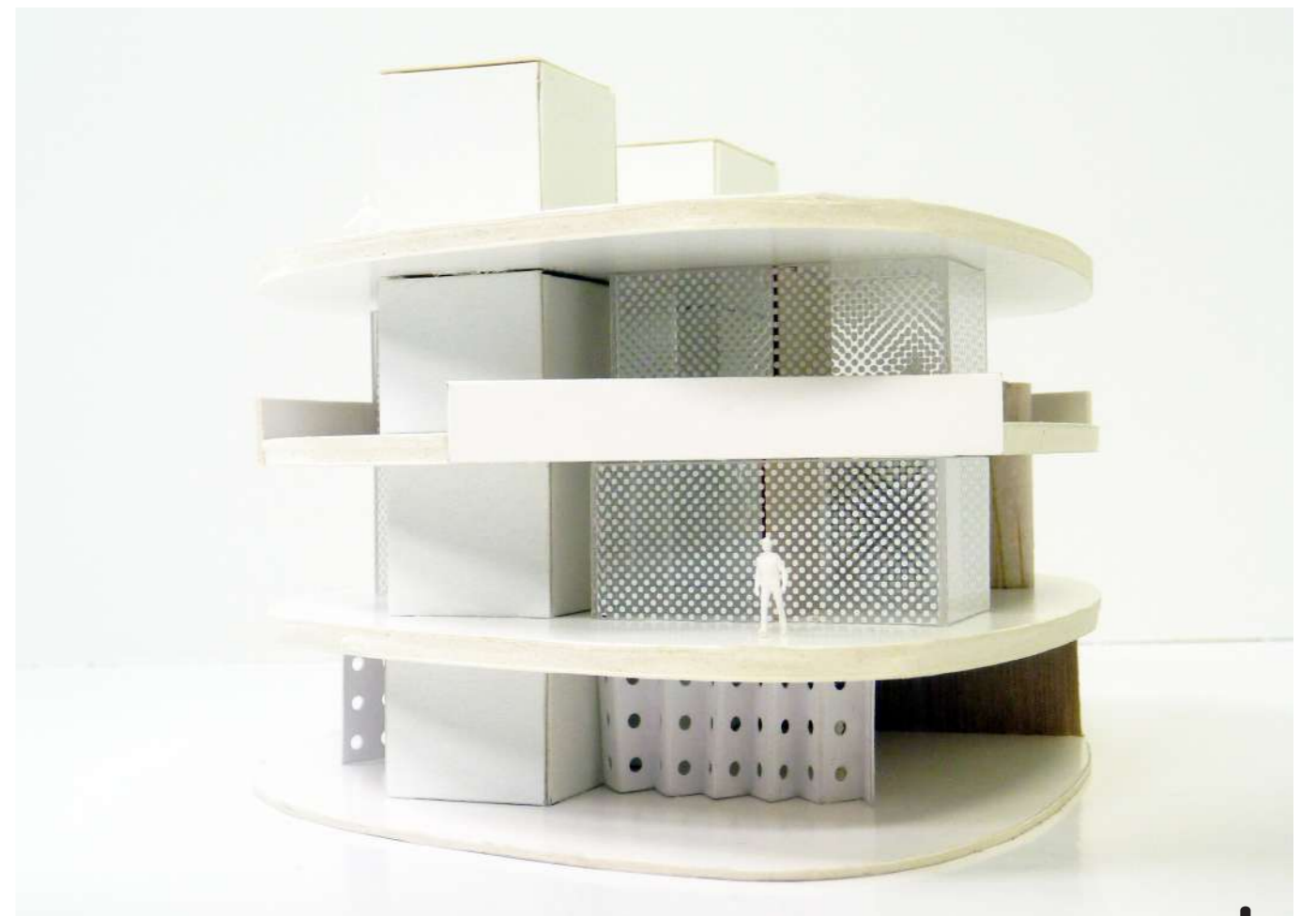
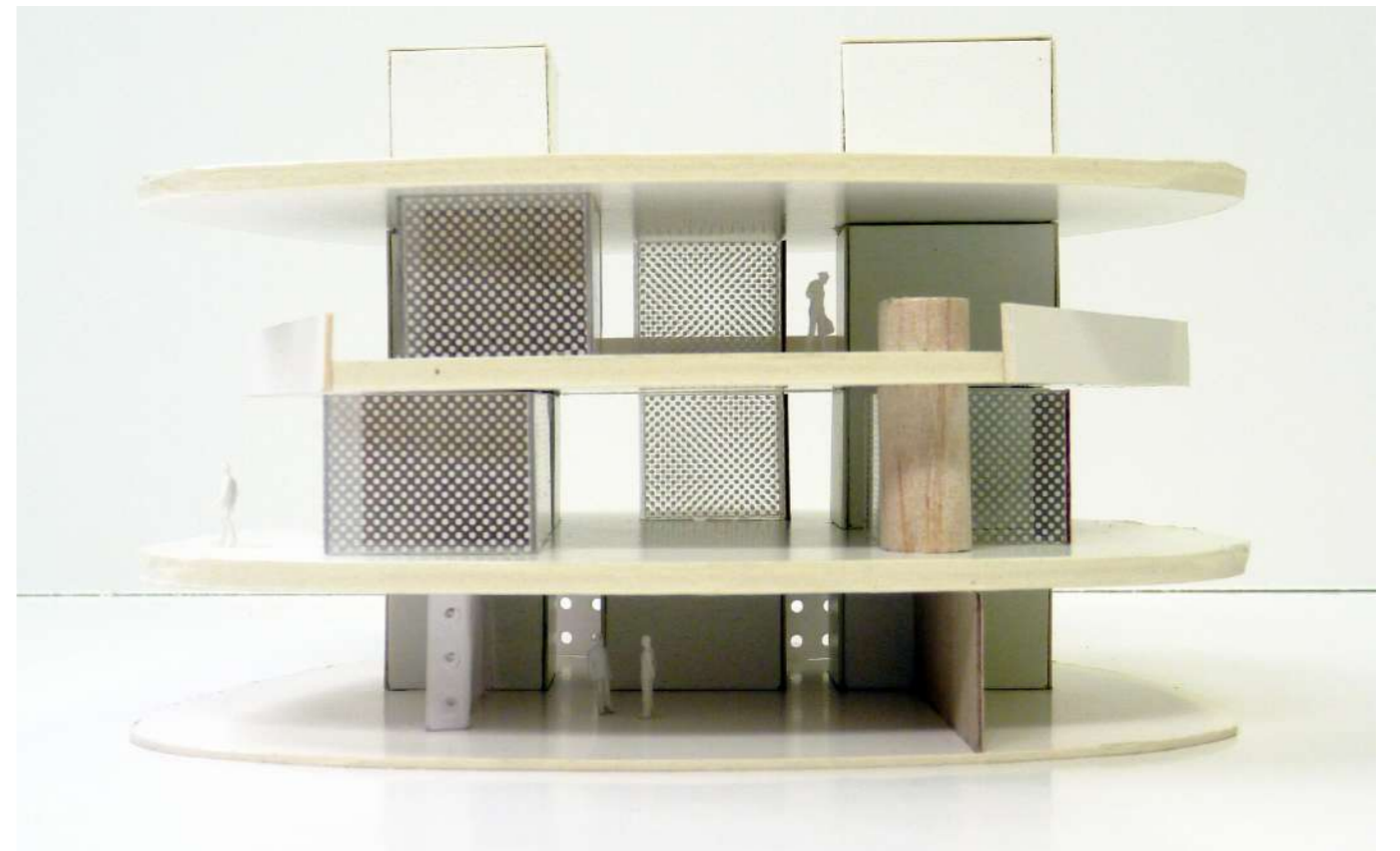
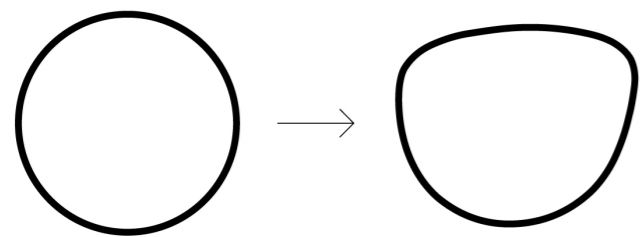
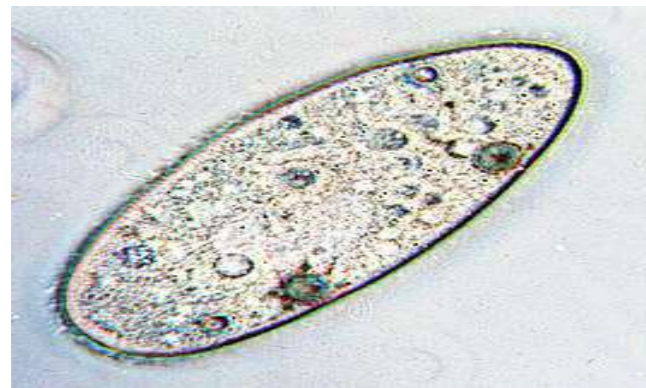
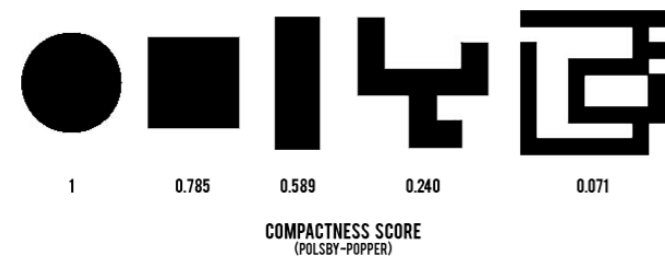




'La tour rouge', Giorgio De Chirico, 1913

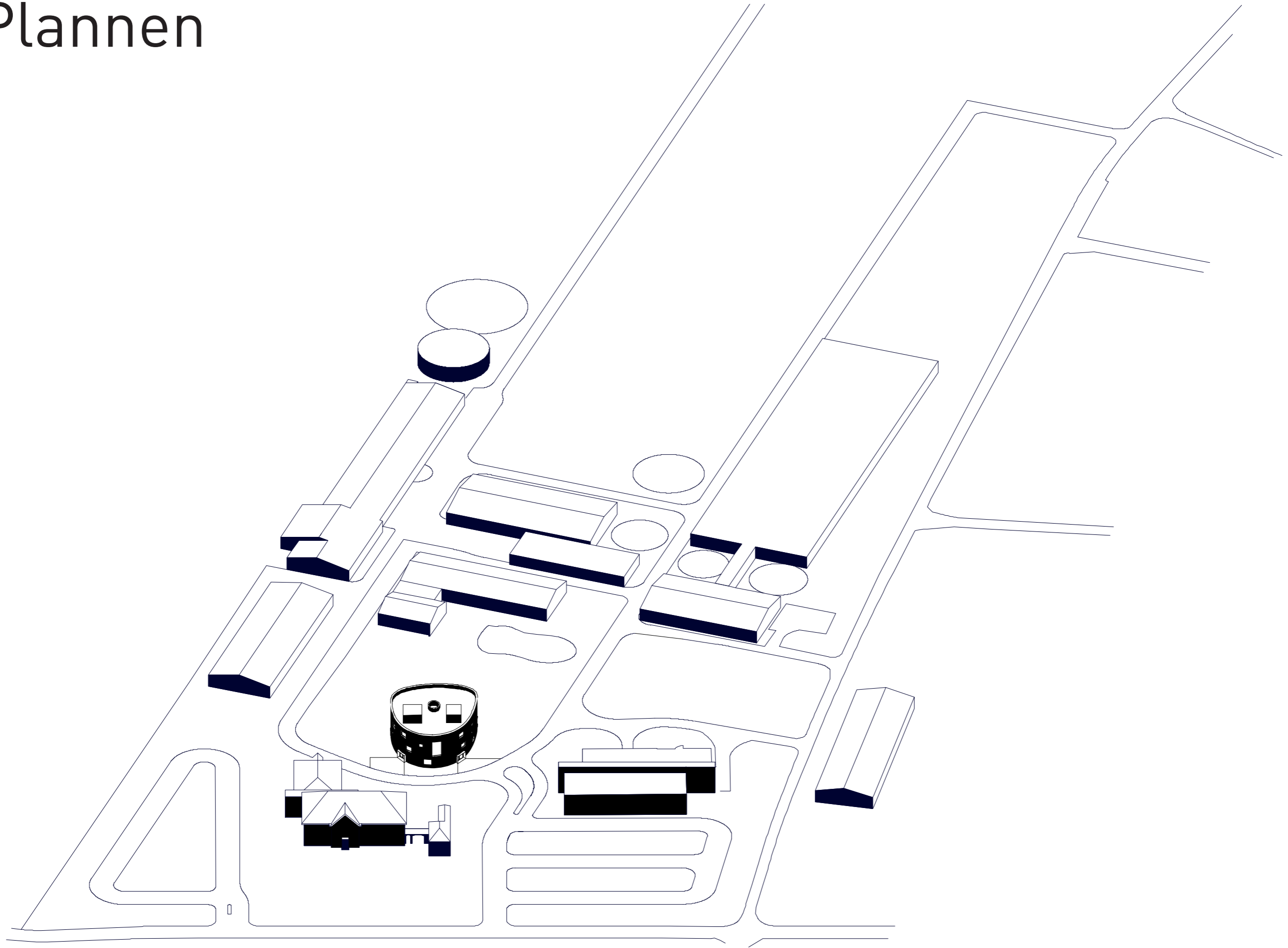
Gebouw

COMPACTE FOOTPRINT / PLANORGANISATIE



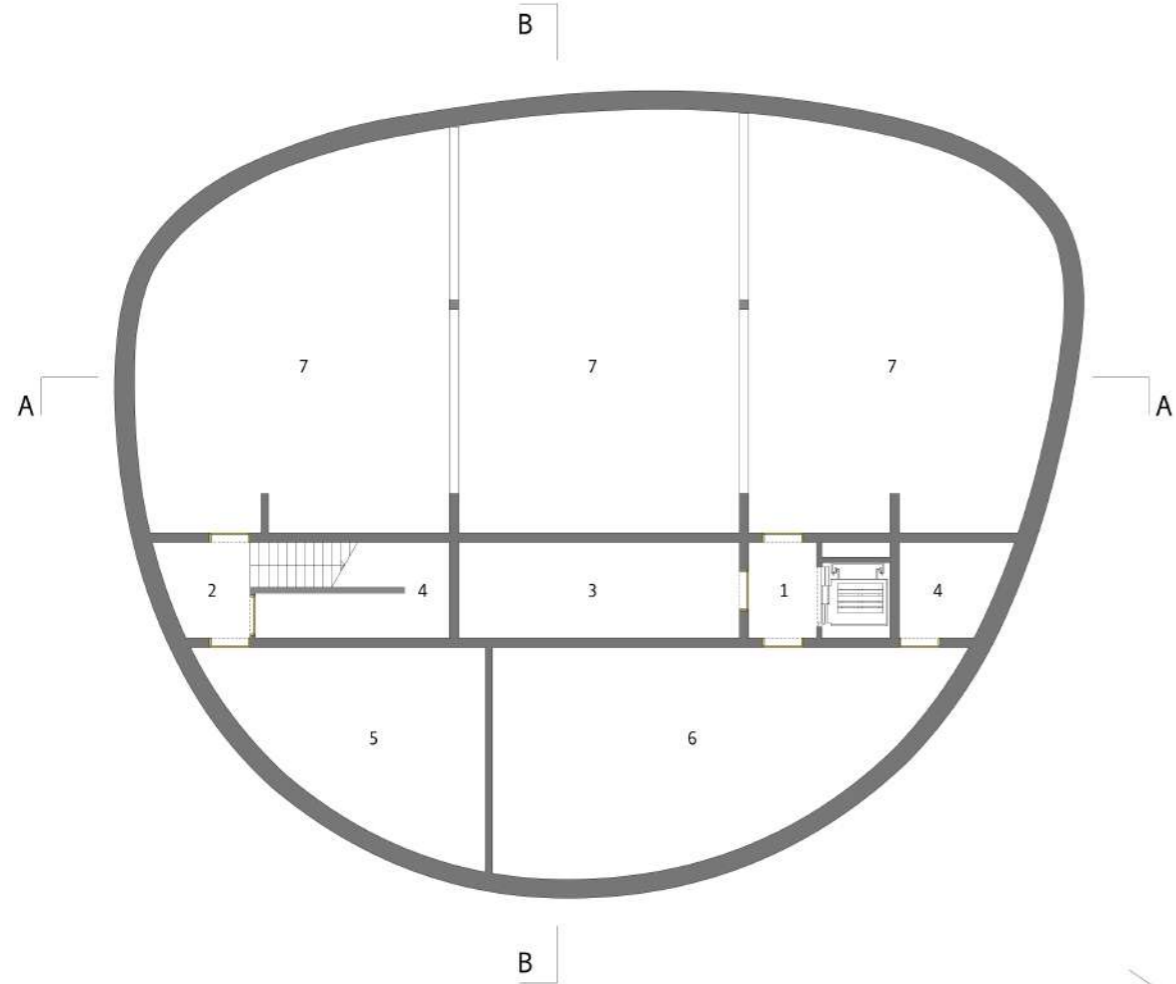
10 september 2013

Plannen



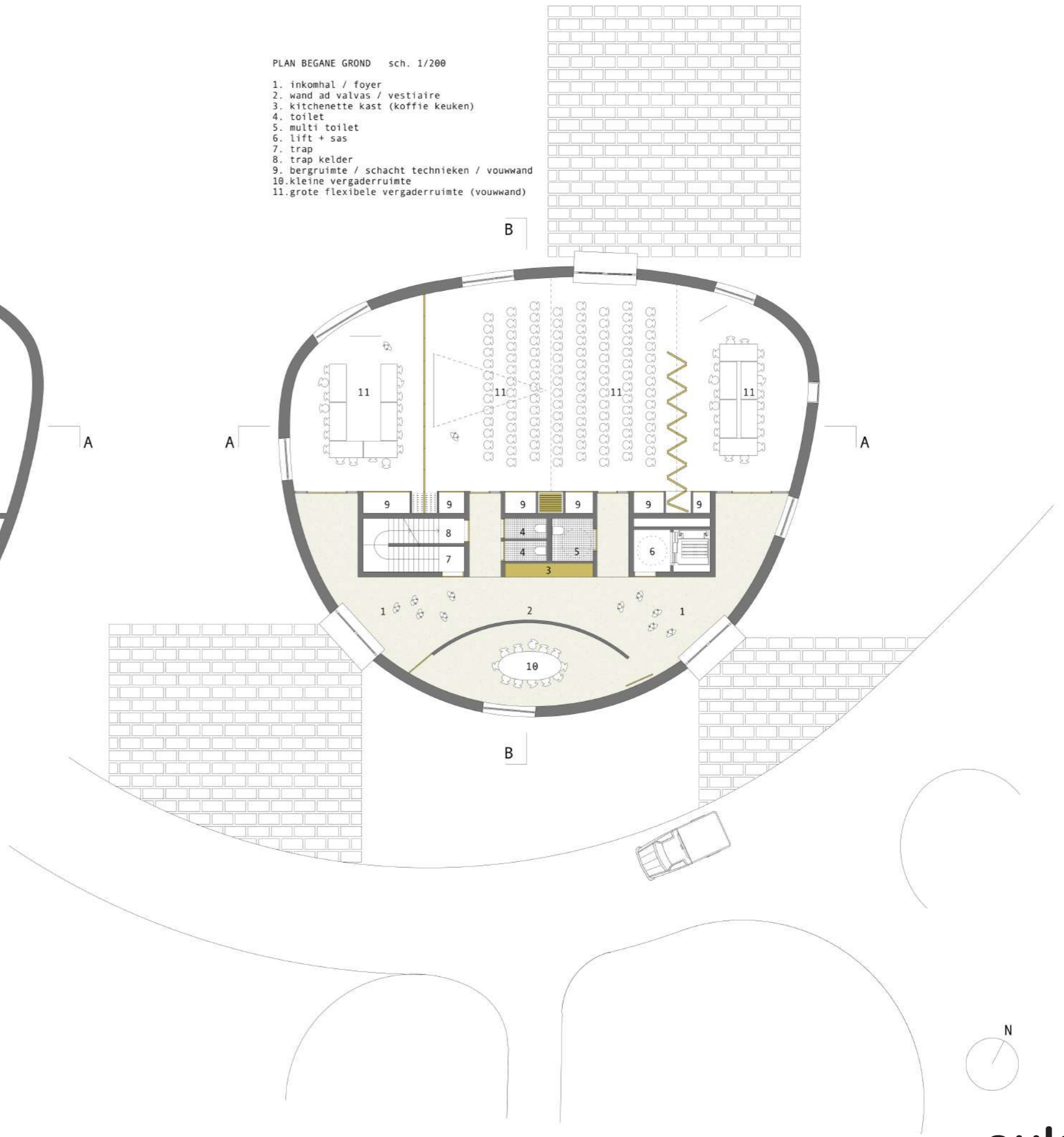
PLAN KELDER sch. 1/200

1. lift + sas
2. trap kelder
3. serverlokaal
4. kleine berging / onderhoud
5. technische ruimte
6. archief ruimte
7. grote berging

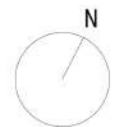


PLAN BEGANE GROND sch. 1/200

1. inkomhal / foyer
2. wand ad valvas / vestiaire
3. kitchenette kast (koffie keuken)
4. toilet
5. multi toilet
6. lift + sas
7. trap
8. trap kelder
9. berg ruimte / schacht technieken / vouwwand
10. kleine vergaderruimte
11. grote flexibele vergaderruimte (vouwwand)

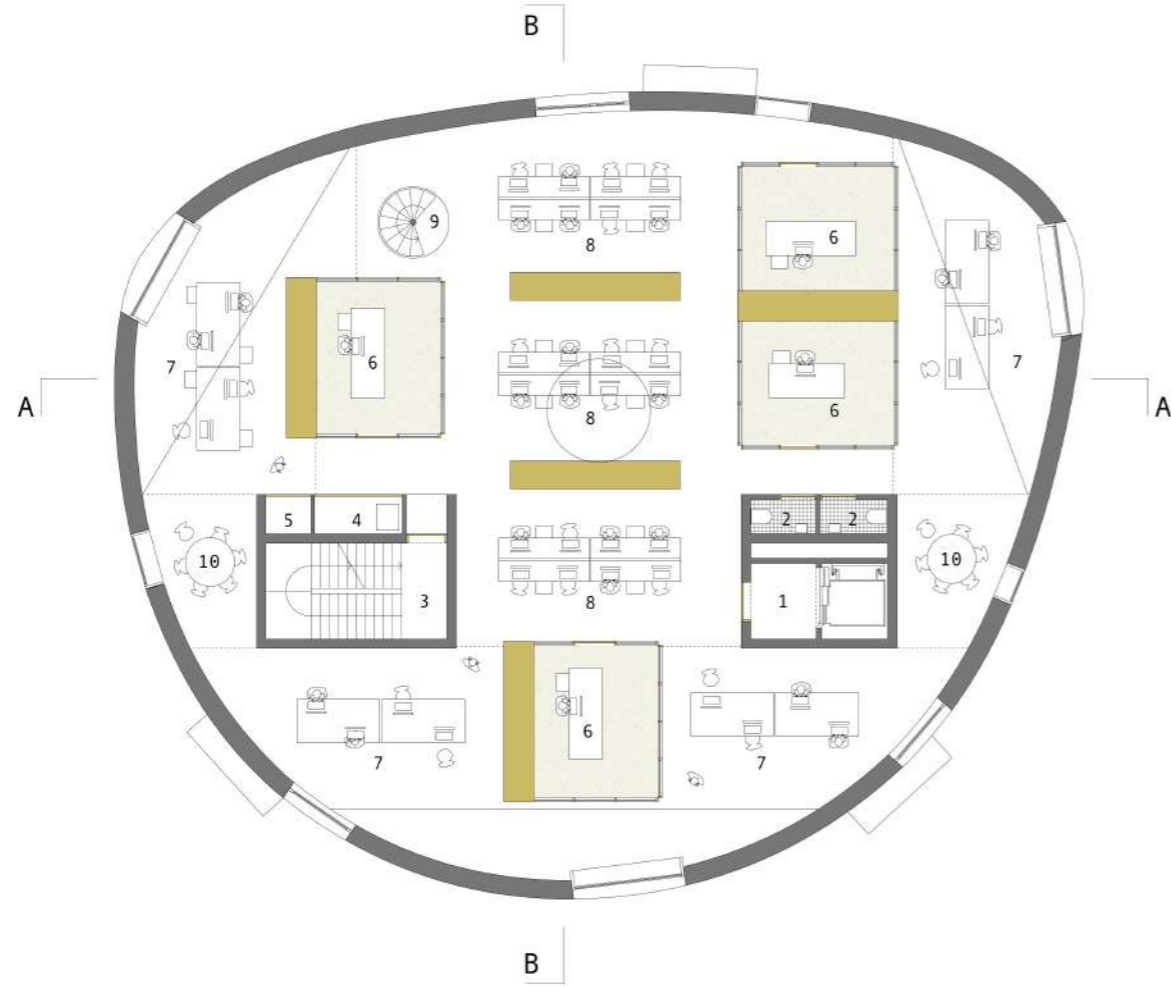


0 | 1 | 5 | 10 | 20



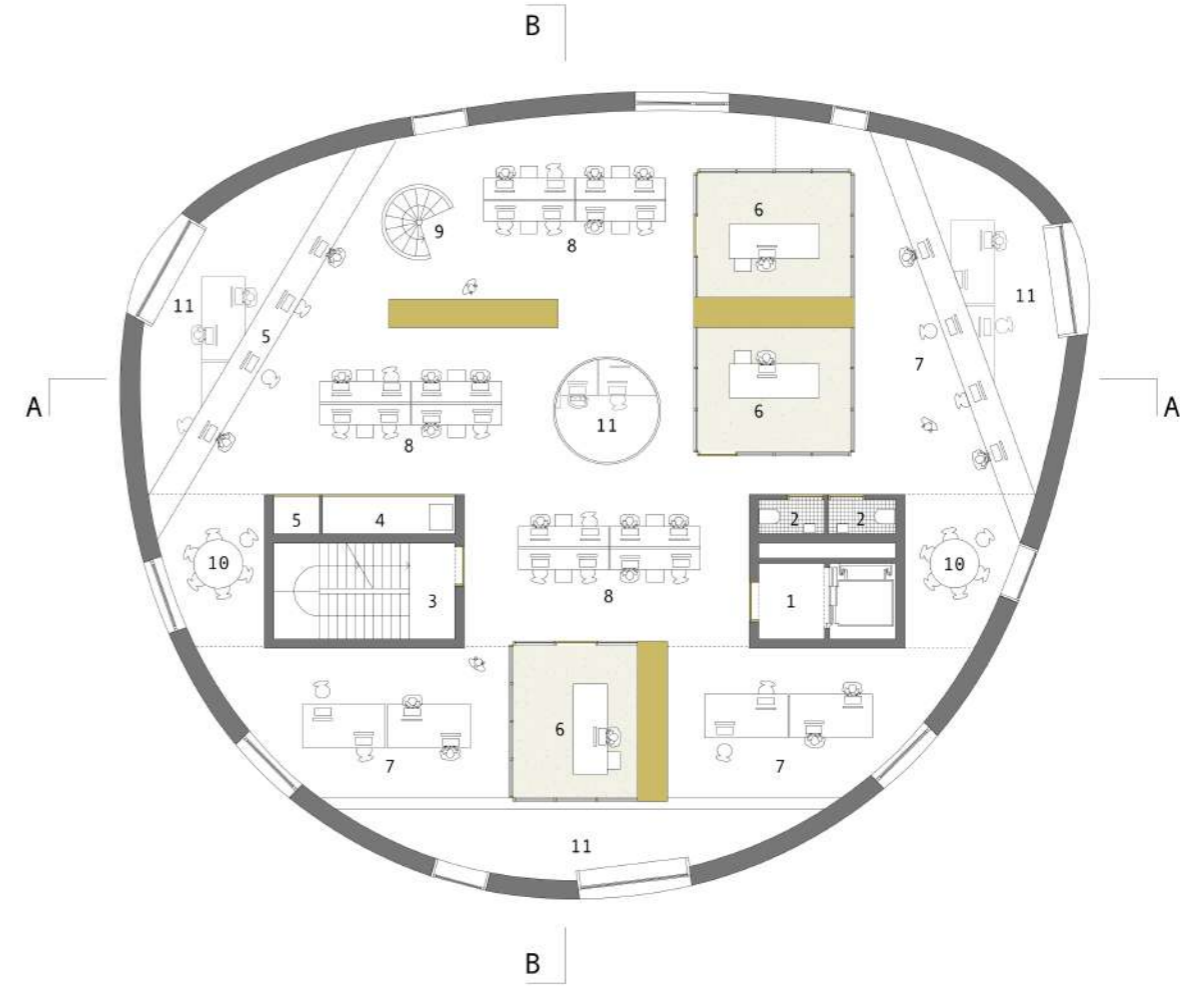
PLAN VERDIEPING 1 sch. 1/200

1. lift + sas
2. toilet
3. trap
4. copies
5. berging
6. 'cubicle' groepsvoorzitter / diensthoofd
7. werkstation projectingenieurs
8. werkstation technische medewerkers
9. interne wenteltrap
10. vergaderplek

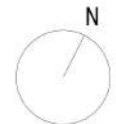


PLAN VERDIEPING 2 sch. 1/200

1. lift + sas
2. toilet
3. trap
4. copies
5. berging
6. 'cubicle' groepsvoorzitter / diensthoofd
7. werkstation projectingenieurs
8. werkstation technische medewerkers
9. interne wenteltrap
10. vergaderplek
11. vide

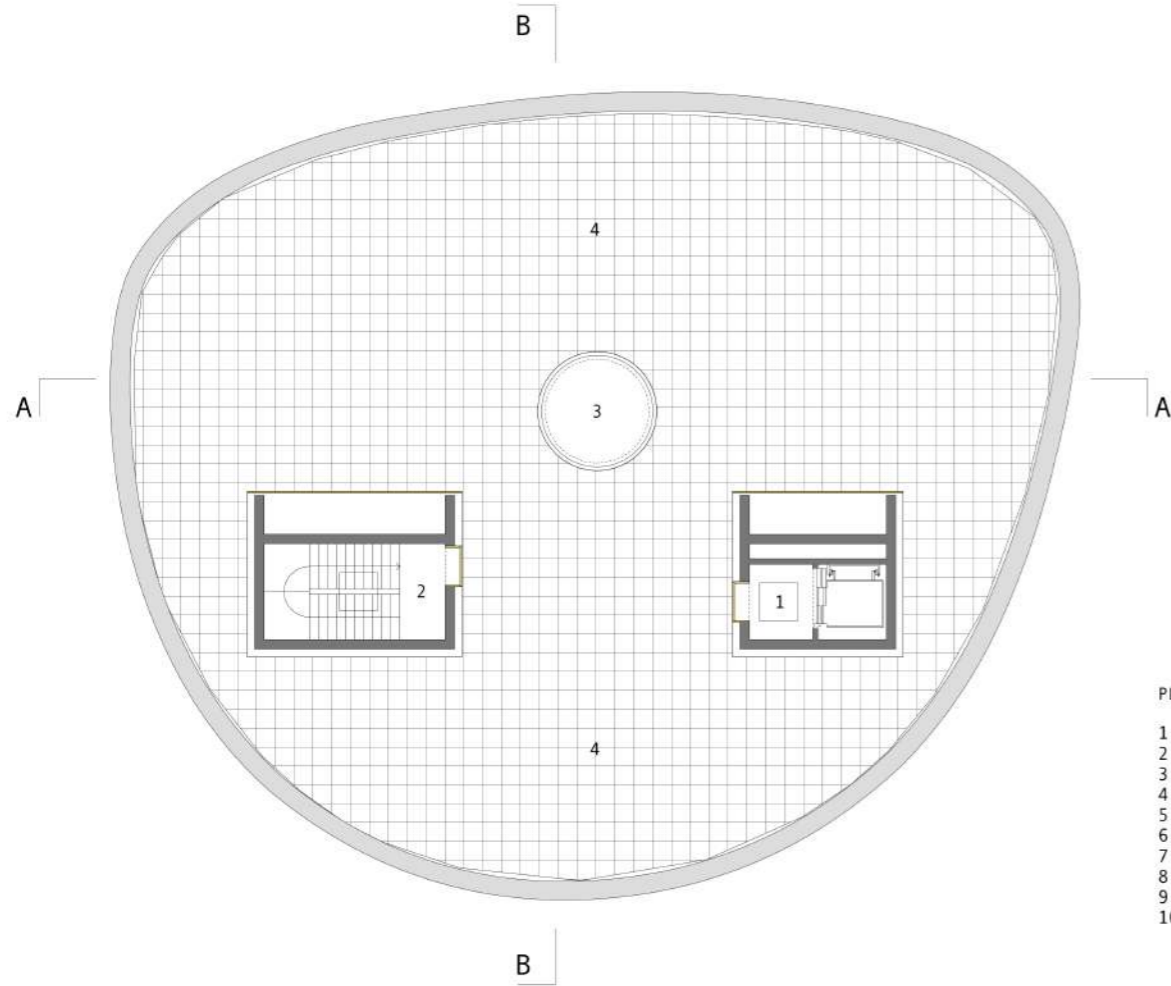


0 | 1 | 5 | 10 | 20



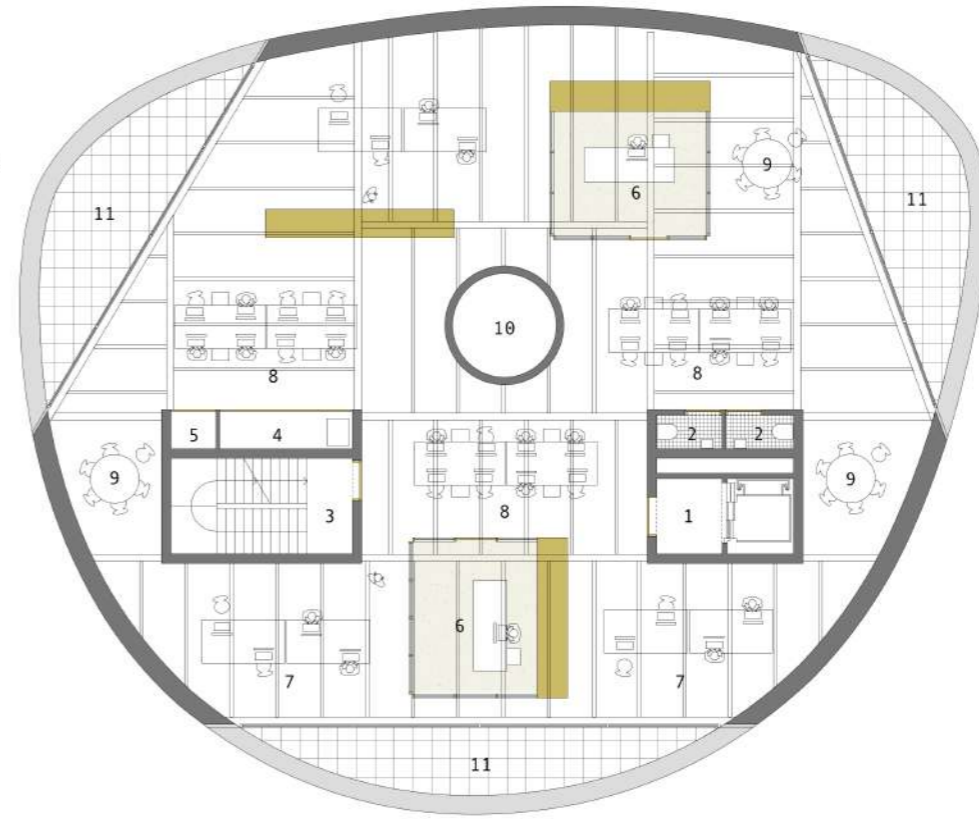
PLAN DAK sch. 1/200

- 1. lift + sas
- 2. trap
- 3. daklicht
- 4. terras



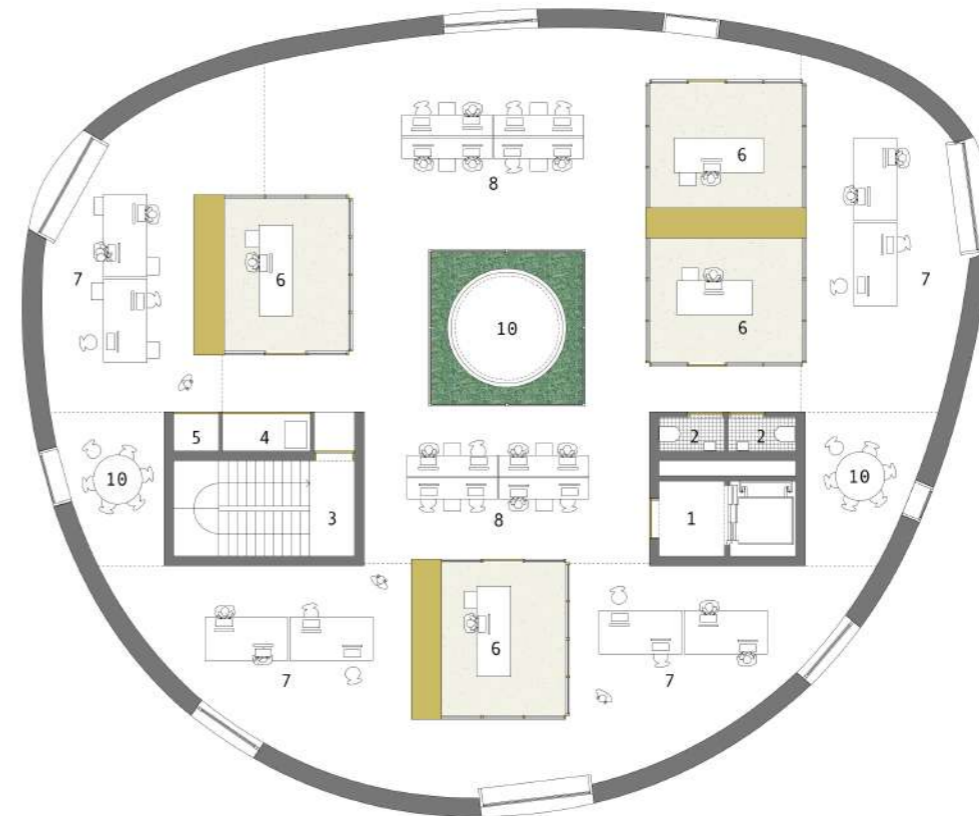
PLAN DAKUITBOUW (scenario 1) sch. 1/200

- 1. lift + sas
- 2. toilet
- 3. trap
- 4. copies
- 5. berging
- 6. 'cubicle' groepsvoorzitter / diensthoofd
- 7. werkstation projectingenieurs
- 8. werkstation technische medewerkers
- 9. vergaderplek
- 10. lichtschacht
- 11. terras

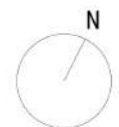


PLAN DAKUITBOUW (scenario 2) sch. 1/200

- 1. lift + sas
- 2. toilet
- 3. trap
- 4. copies
- 5. berging
- 6. 'cubicle' groepsvoorzitter / diensthoofd
- 7. werkstation projectingenieurs
- 8. werkstation technische medewerkers
- 9. vergaderplek
- 10. dakpatio / lichtkoepel



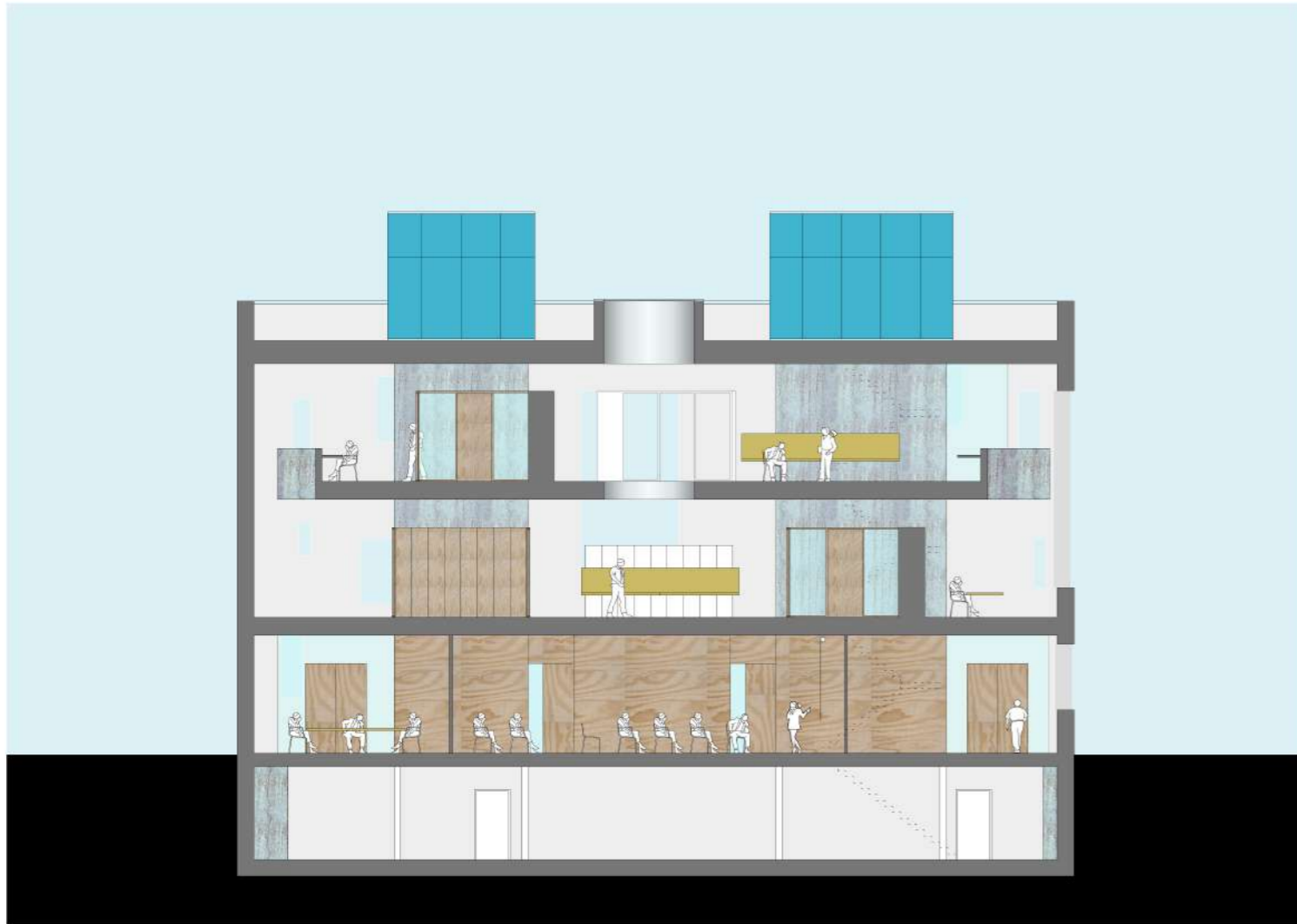
0 1 5 10 20



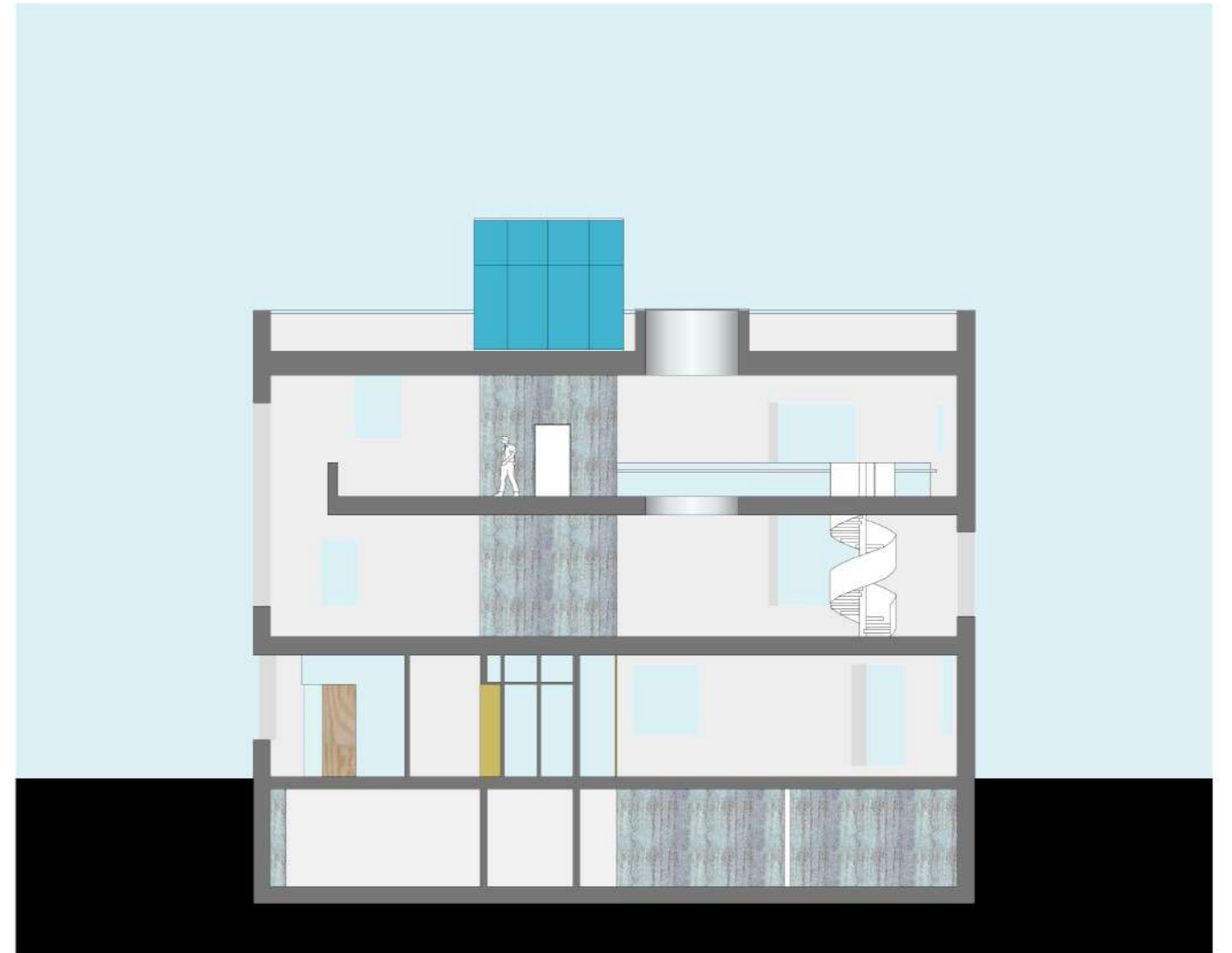
ROYALE HOOGTE / GEBALD VOLUME /
INTIMISTISCHE RUIMTELIJKHEID



10 september 2013



LANGSSNEDE A-A sch. 1/200



LANGSSNEDE B-B sch. 1/200

BEELD & GESTALT



National Assembly Building, Dhaka, Louis Kahn

Heerich turm, Insel hombroich

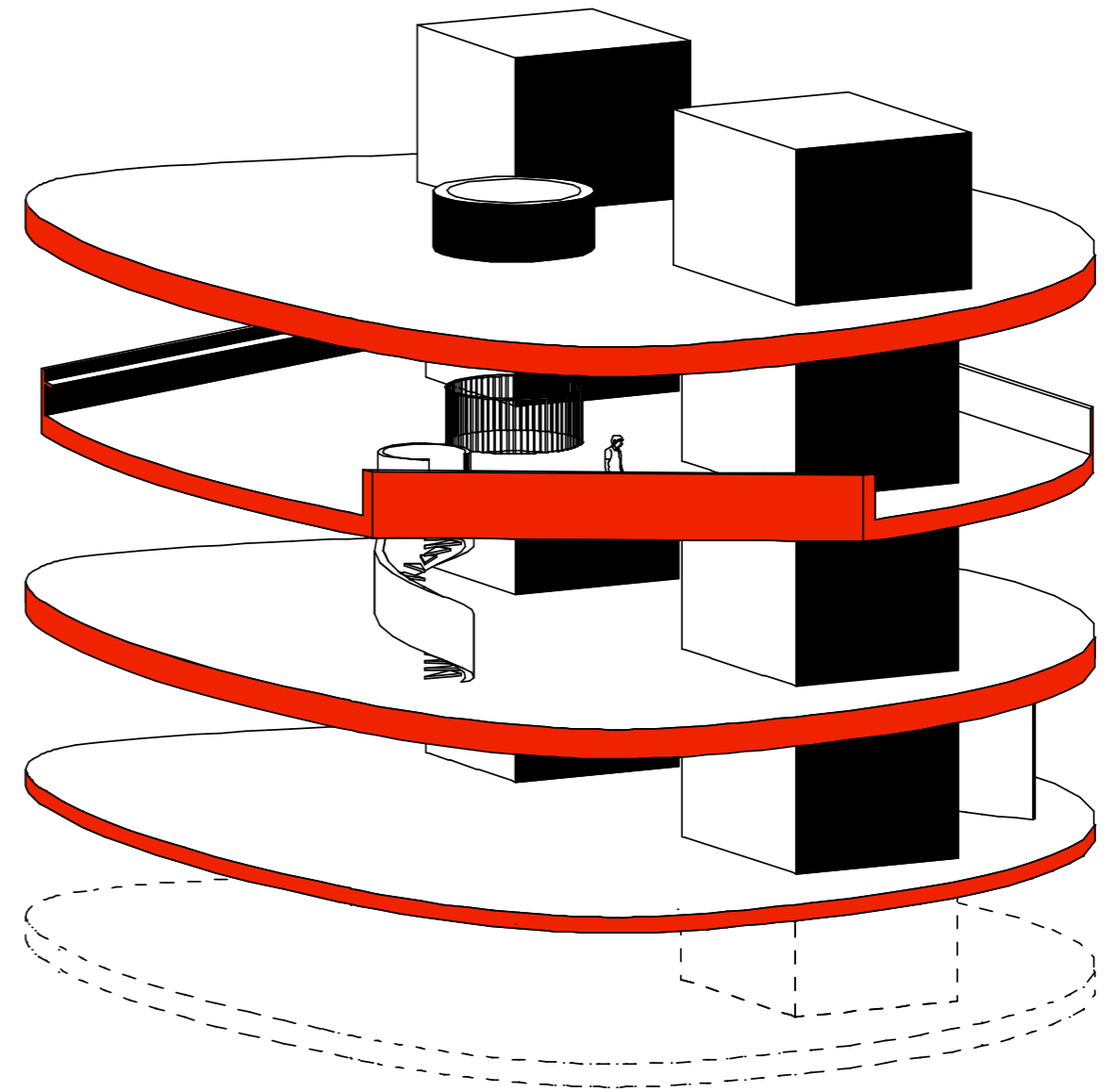
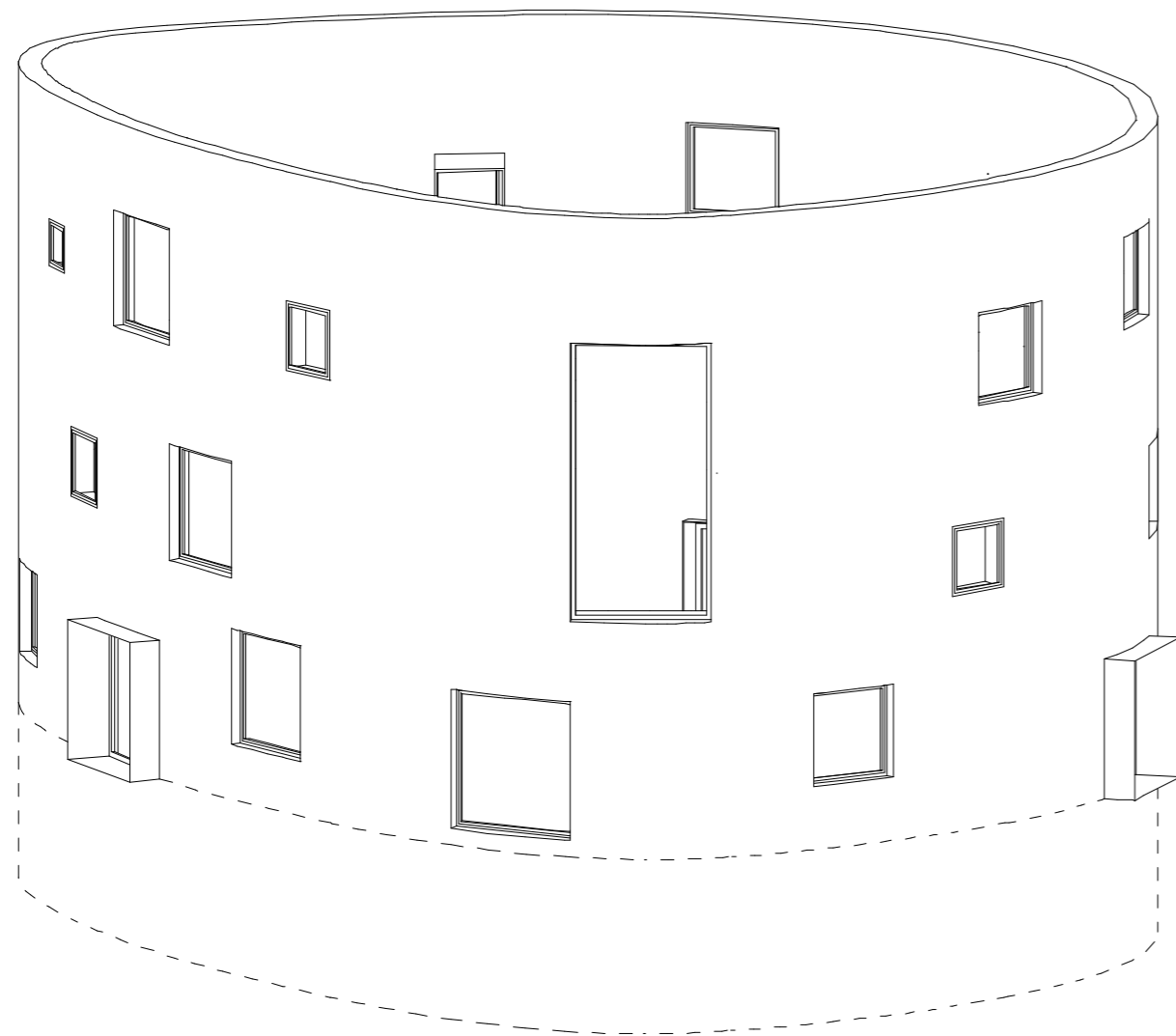


10 september 2013



Materiali- satie

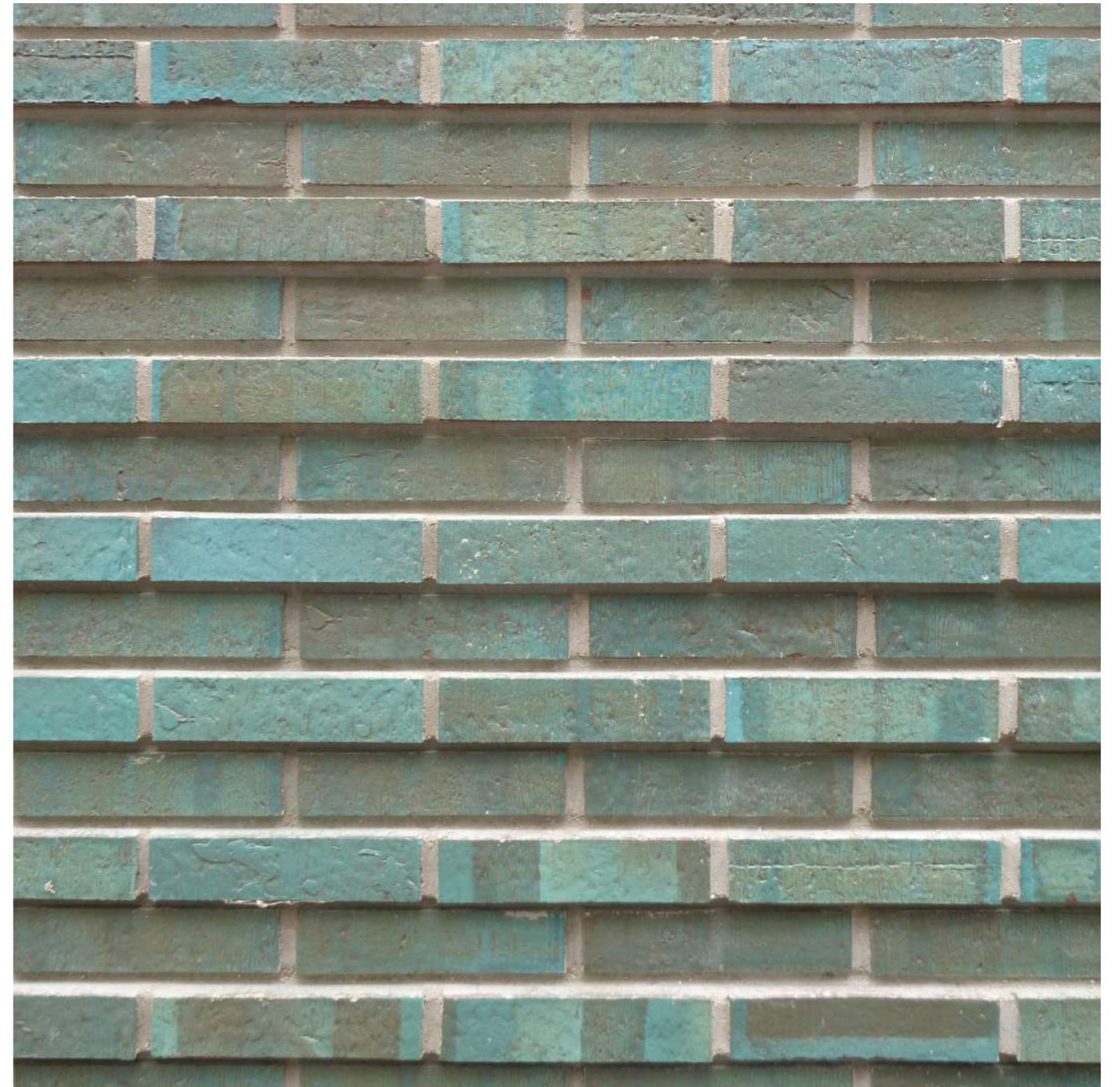
Structuur



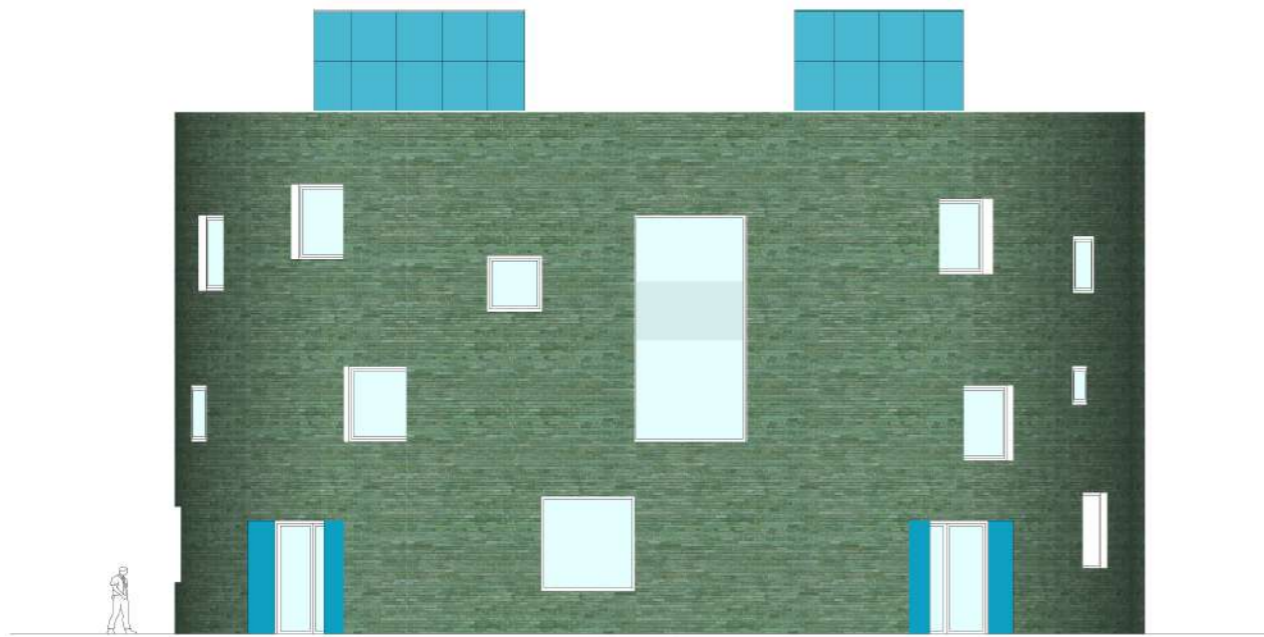
Huid



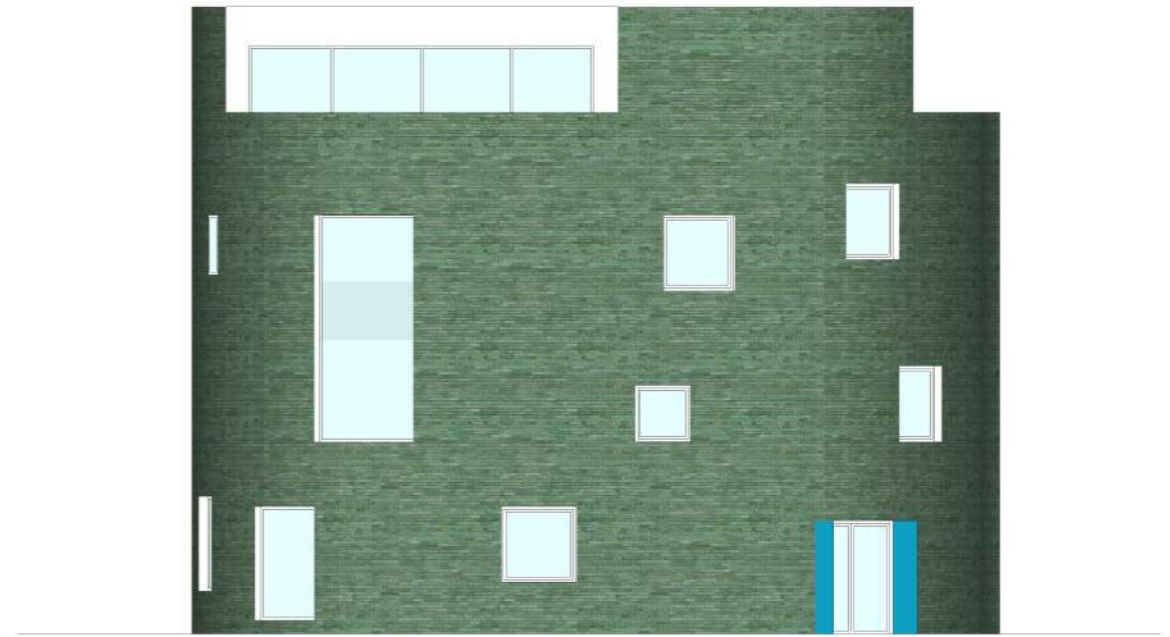
Appartement Forsterstrasse, Zürich, Christian Kerez



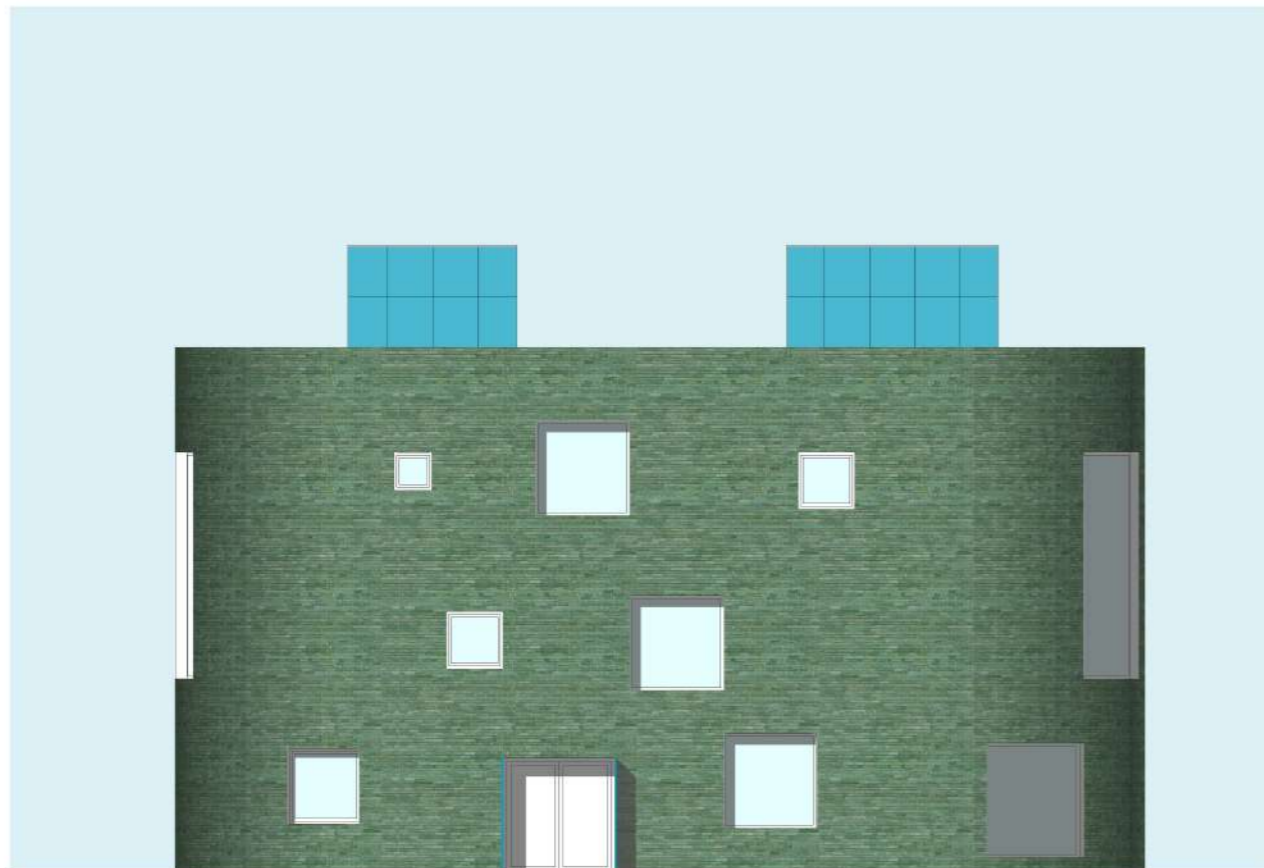
Woontoren Kuifje, Rotterdam, NLarchitects



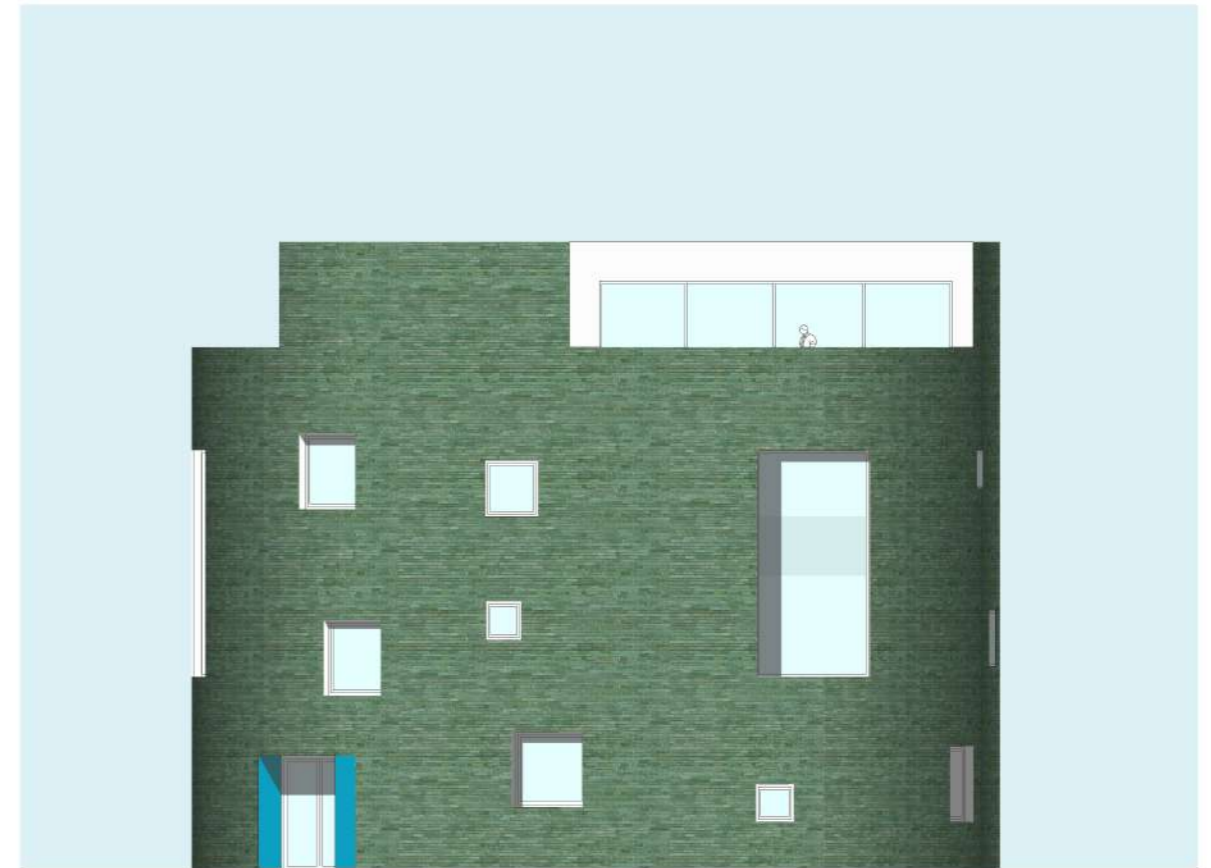
GEVEL ZUID sch. 1/200



GEVEL WEST met dakuitbouw scenario 1 sch. 1/200



GEVEL NOORD sch. 1/200



GEVEL OOST met dakuitbouw scenario 1 sch. 1/200

Interieur



Stadhuis, Kortrijk, Noa-architecten



Art Gallery, Walsall, Caruso - St John Architects

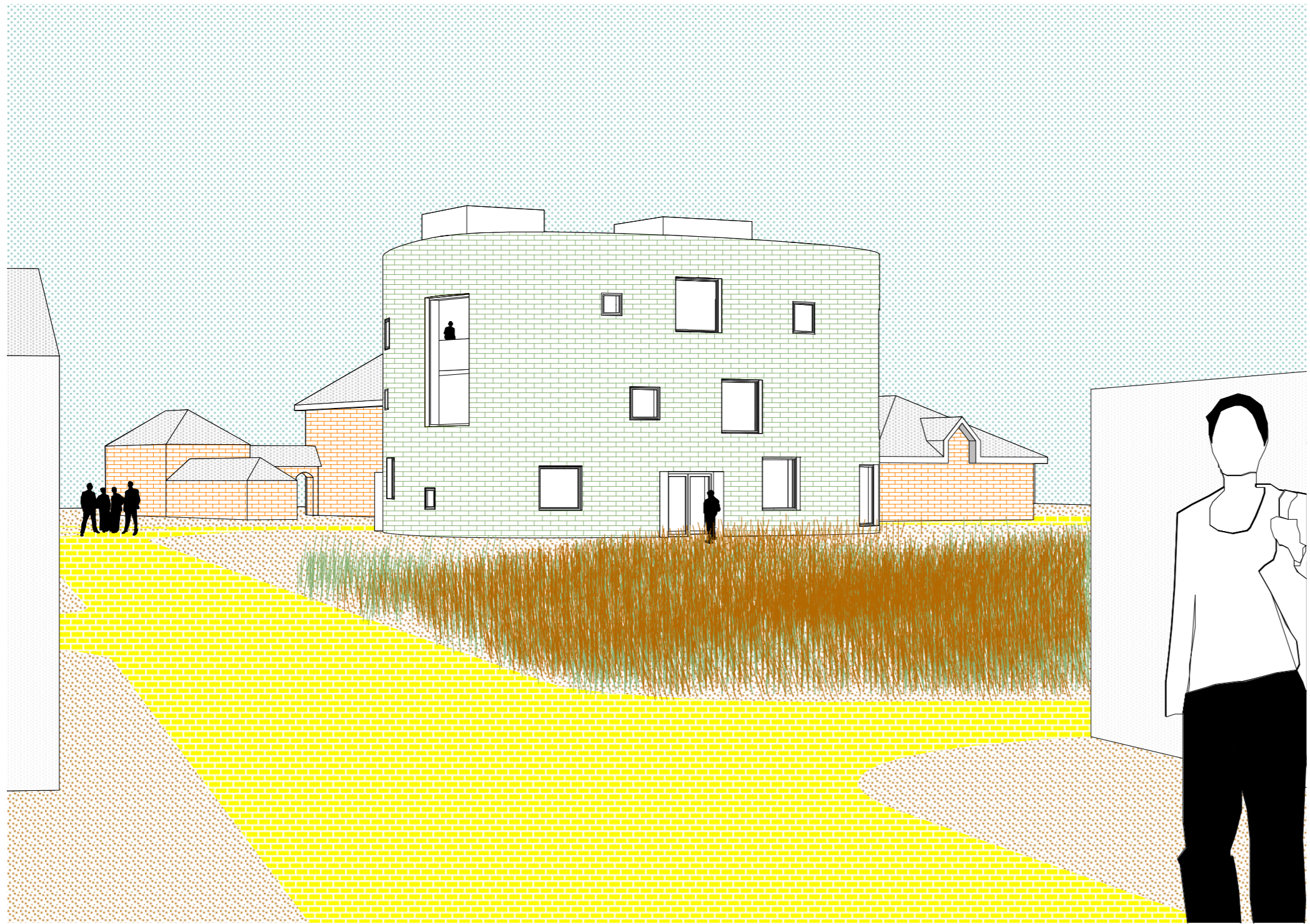
10 september 2013



Position tuning / Wisselwerking

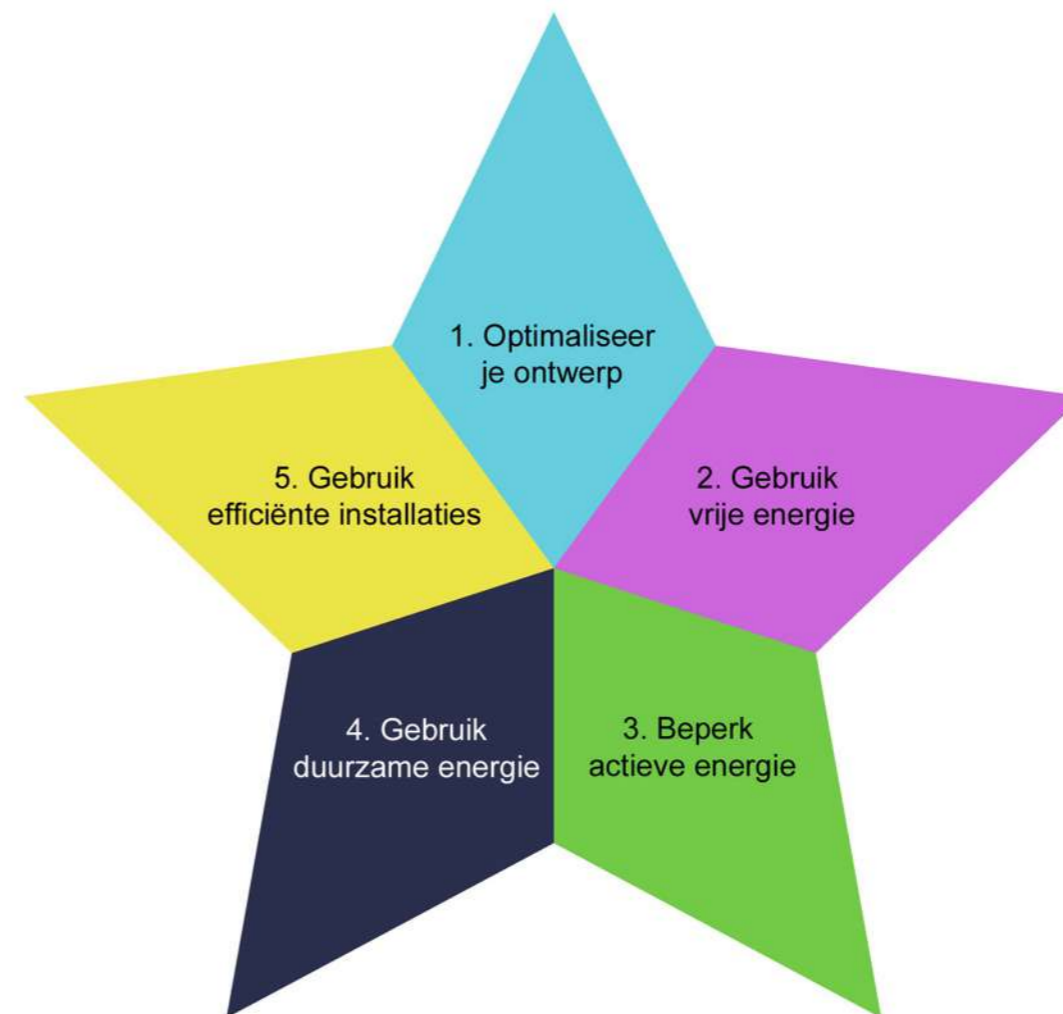
10 september 2013



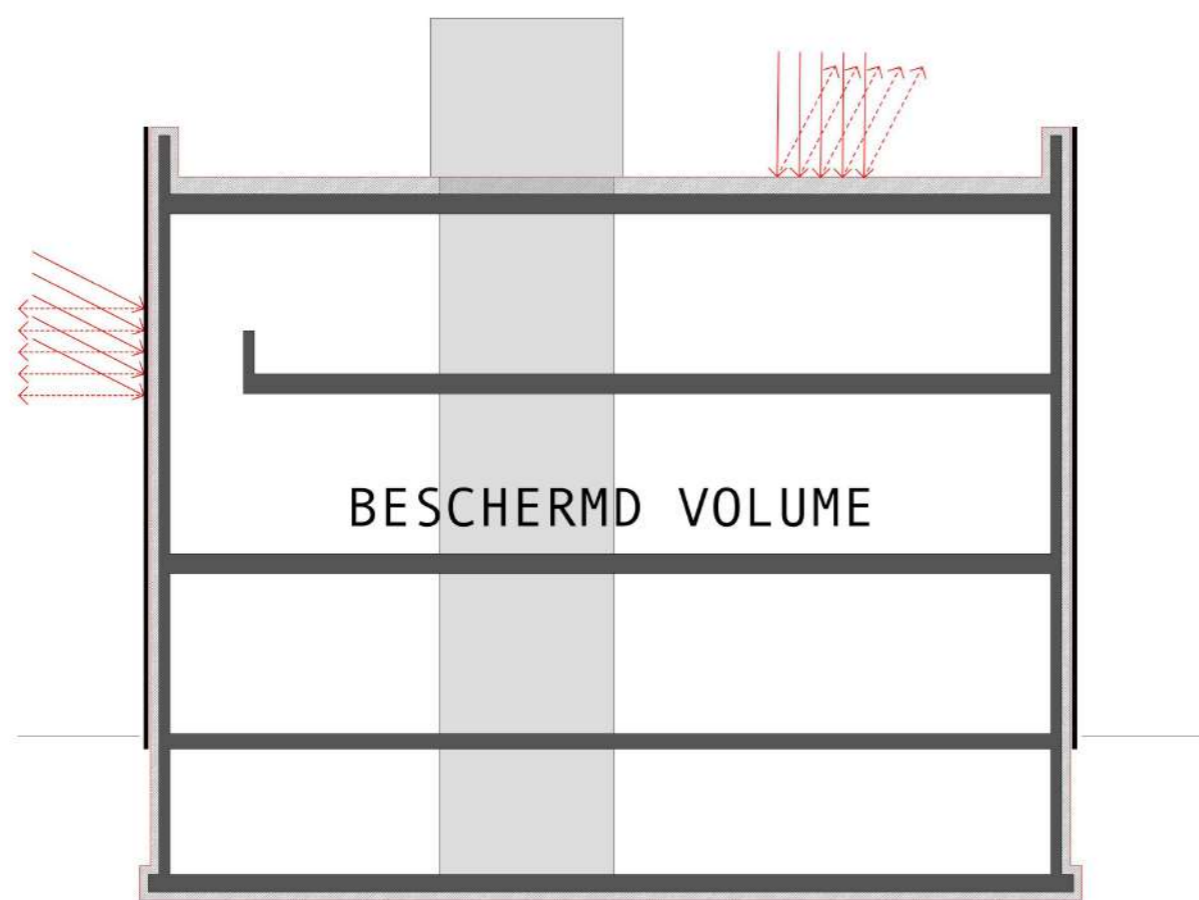


Duurzaam & laag- energie

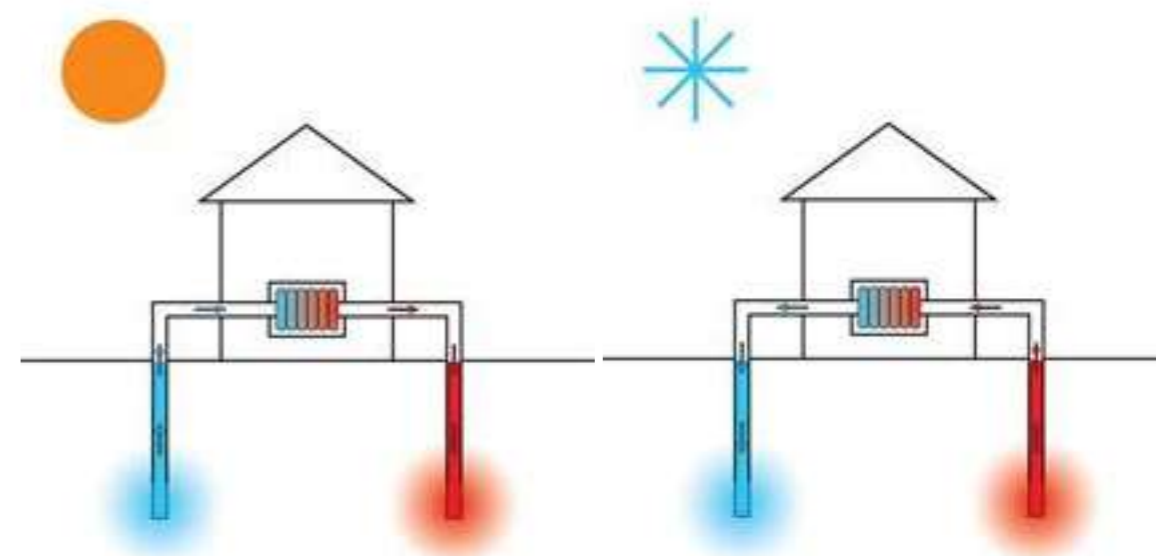
Duurzaam
energieverbruik
watergebruik
materiaalgebruik



- 1/ OPTIMALISEER HET ONTWERP
- 2/ PAS VRIJE ENERGIE TOE
- 3/ INVESTEER IN PASSIEVE TECHNIEKEN
- 4/ PAS HERNIEUWBARE ENERGIE TOE

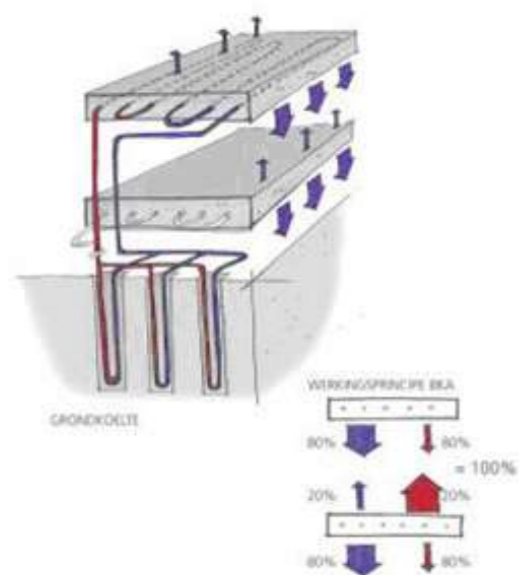


optimale isolatieschil

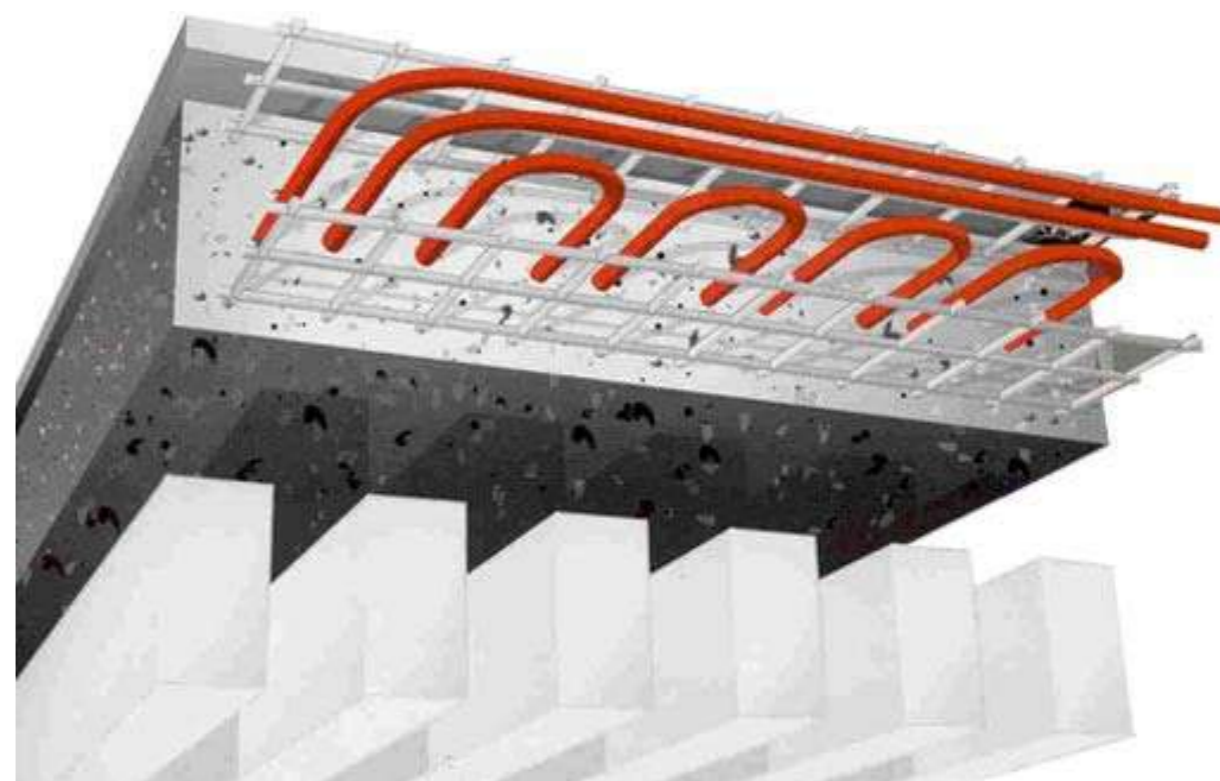
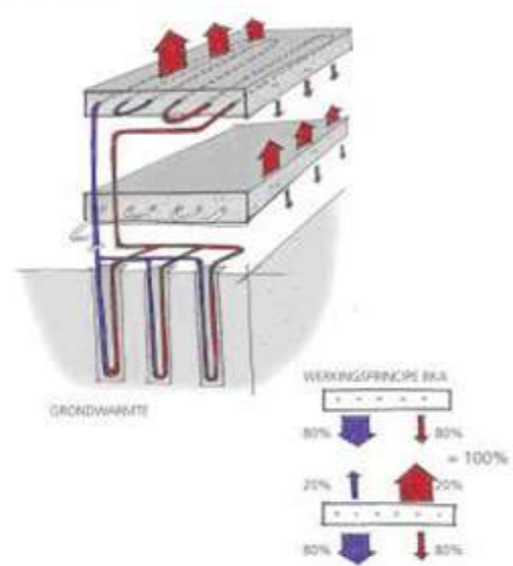


koude- en warmteopslag dmv geothermie

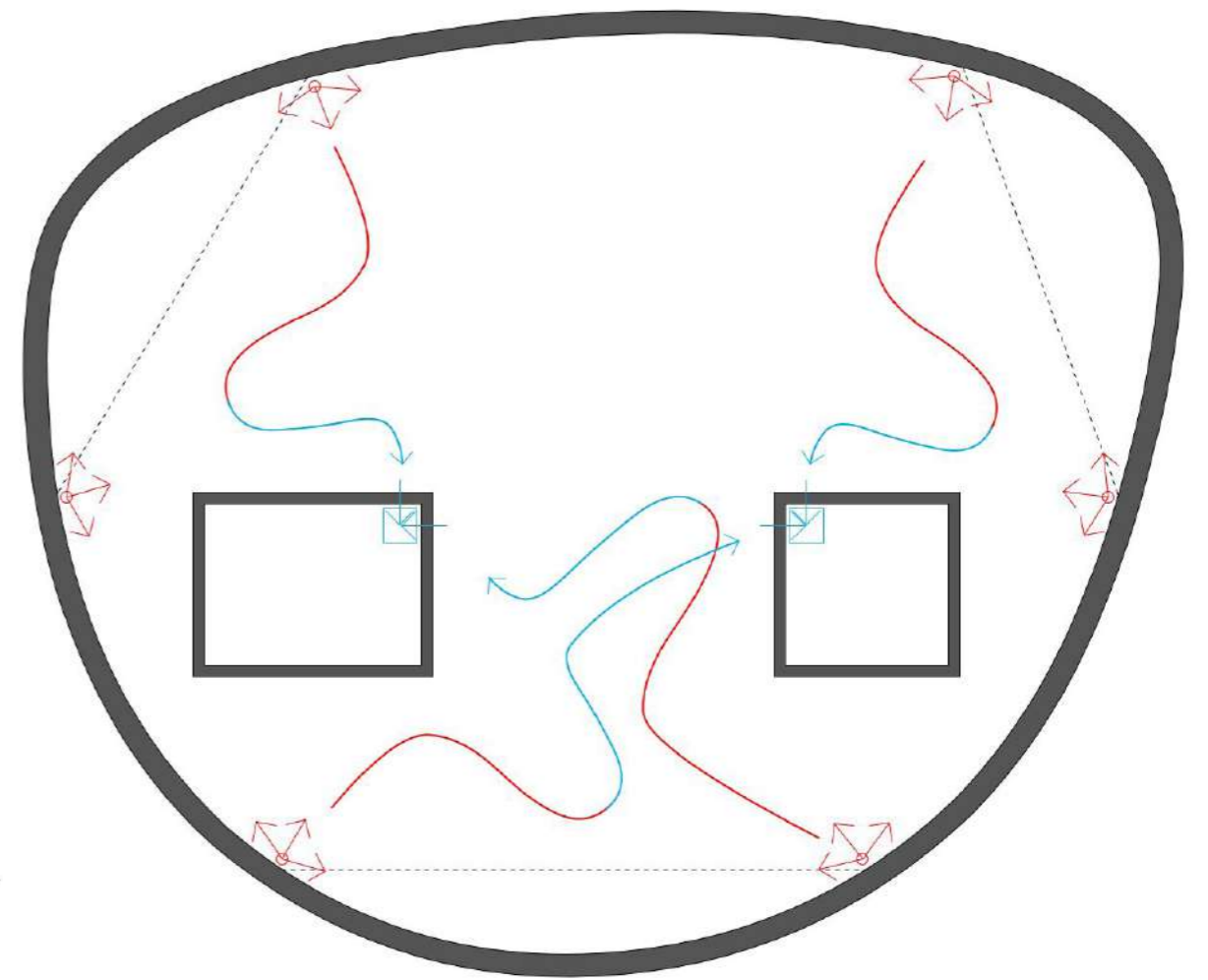
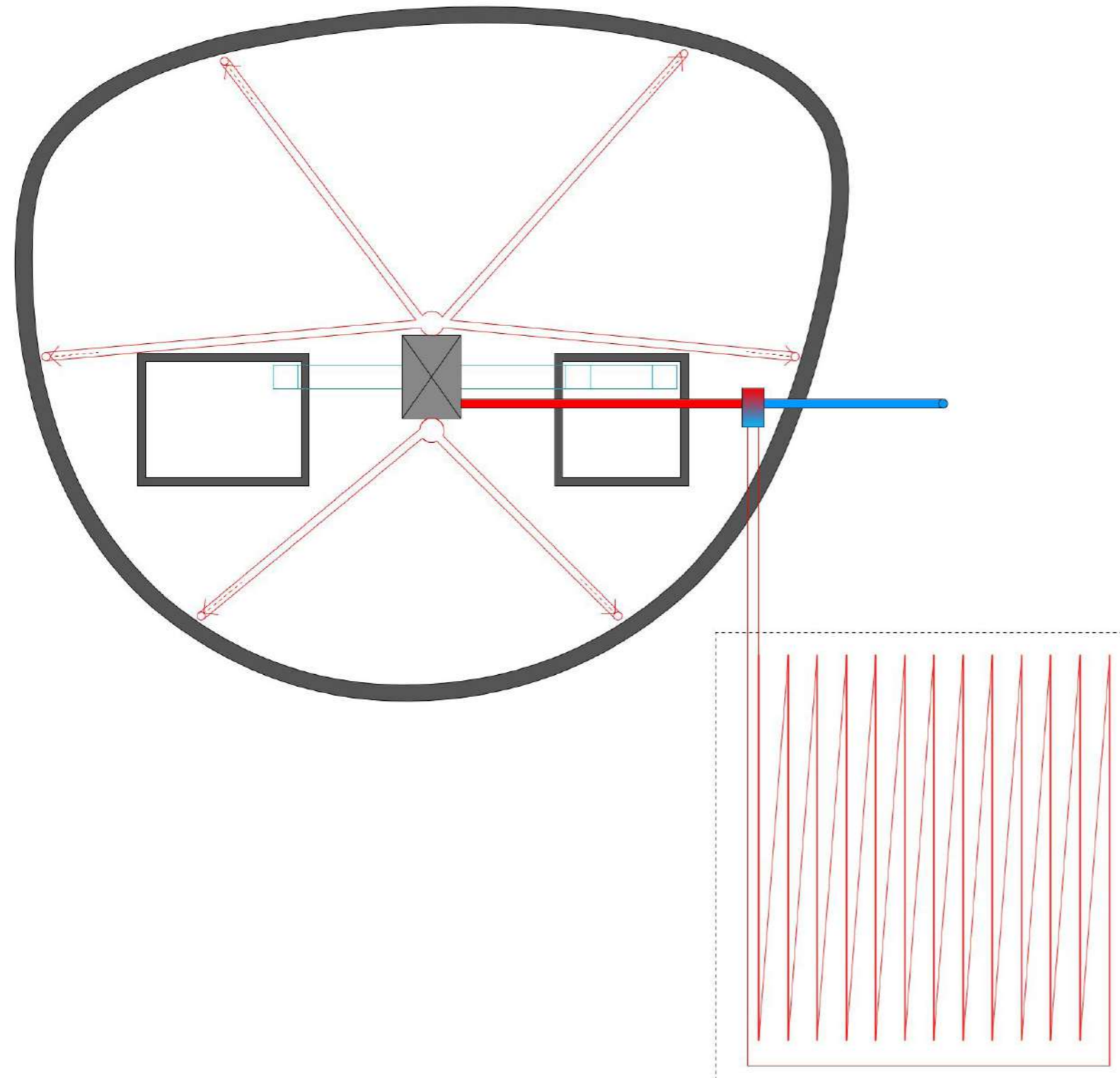
BETONKERNACTIVERING [BKA]
WARMTE AFGIETE - ZOMER



BETONKERNACTIVERING [BKA]
WARMTE AFGIETE - WINTER



BKA - betonkernactivering

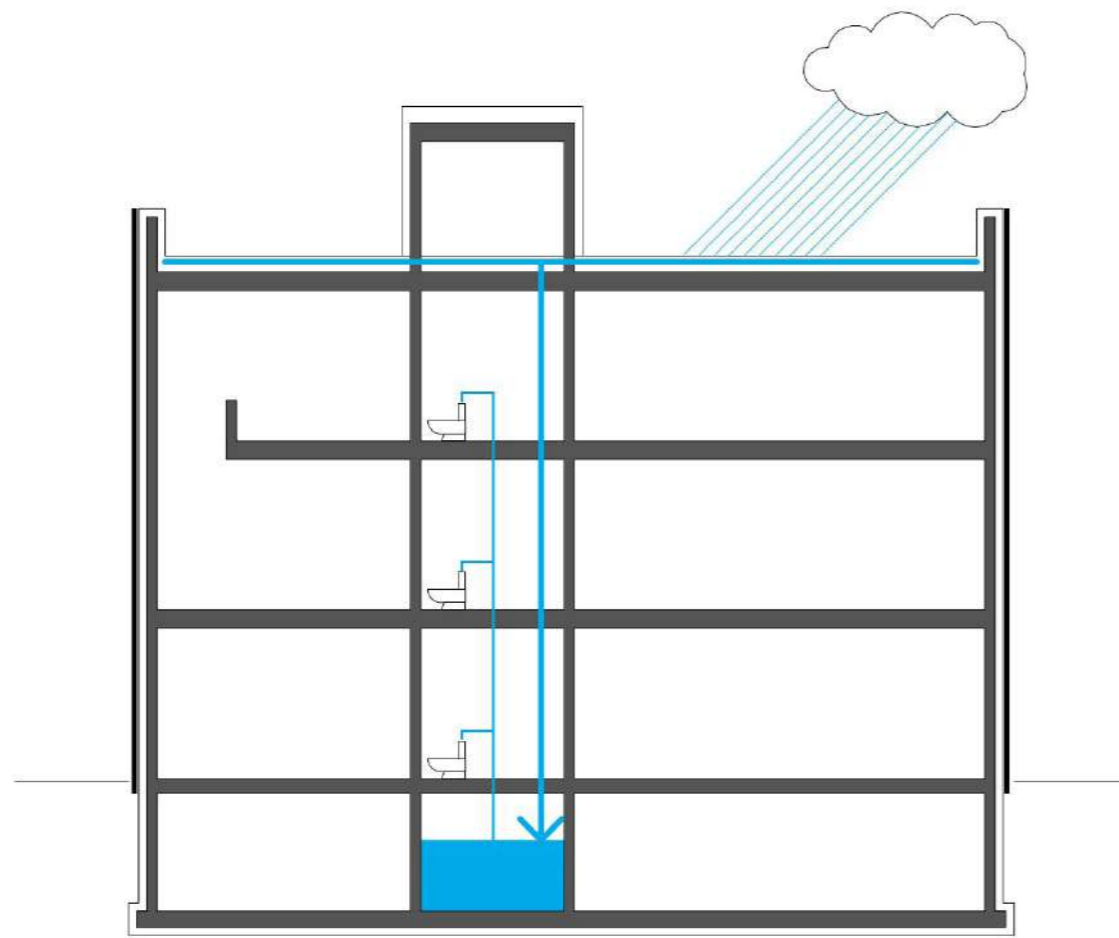


balansventilatie + captatienet bodemwarmtewisselaar

Duurzaam watergebruik

Follow-up

10 september 2013



regenwater-recuperatie





10 september 2013

Optoppen

