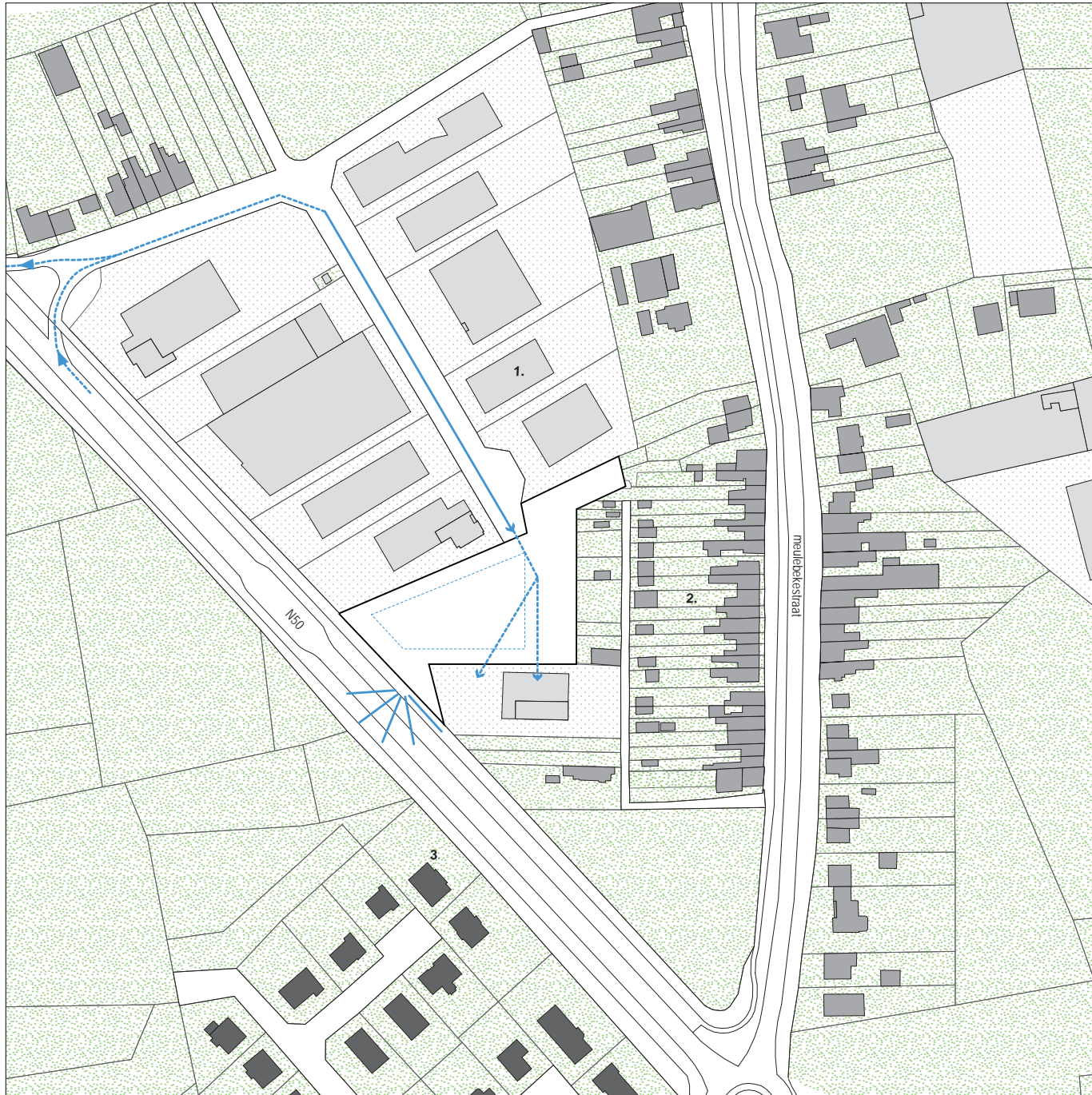




**BEDRIJVENTERREIN INGELMUNSTER**

URA  
UTIL  
LANDZICHT

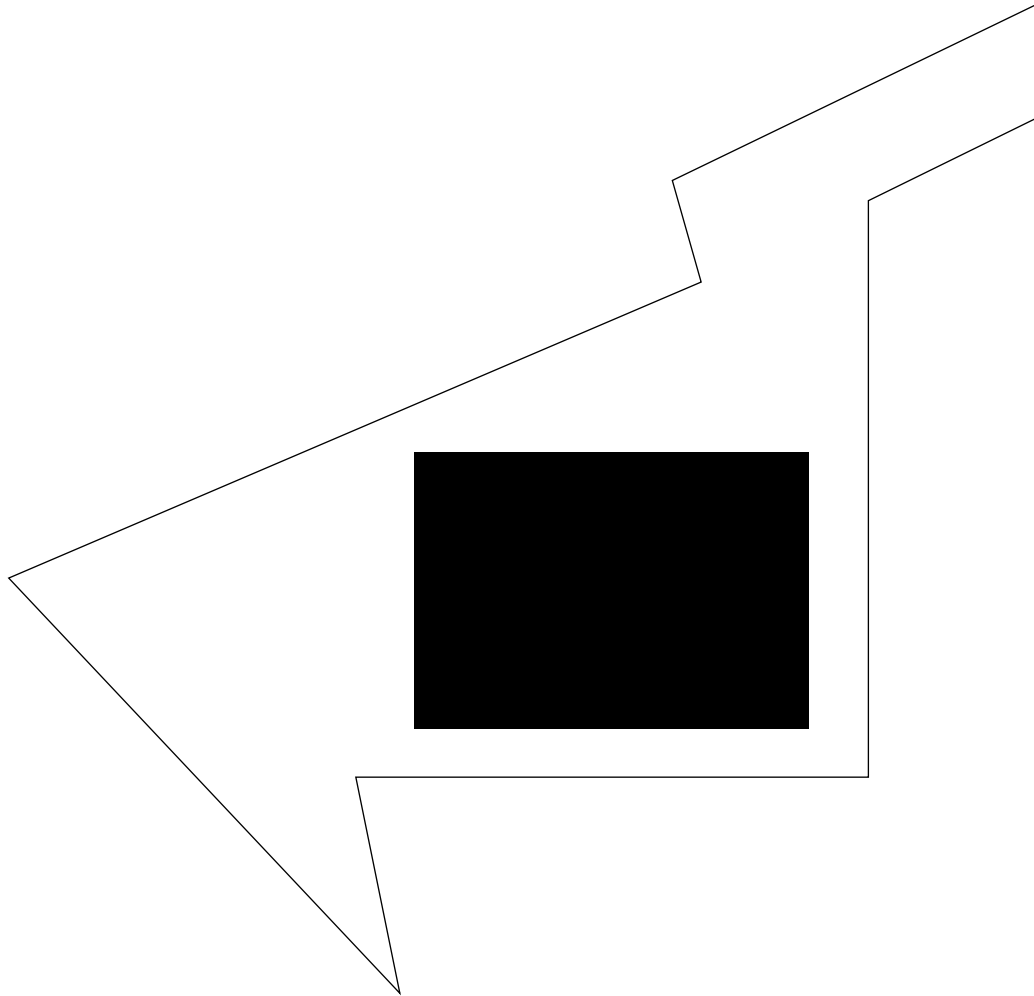




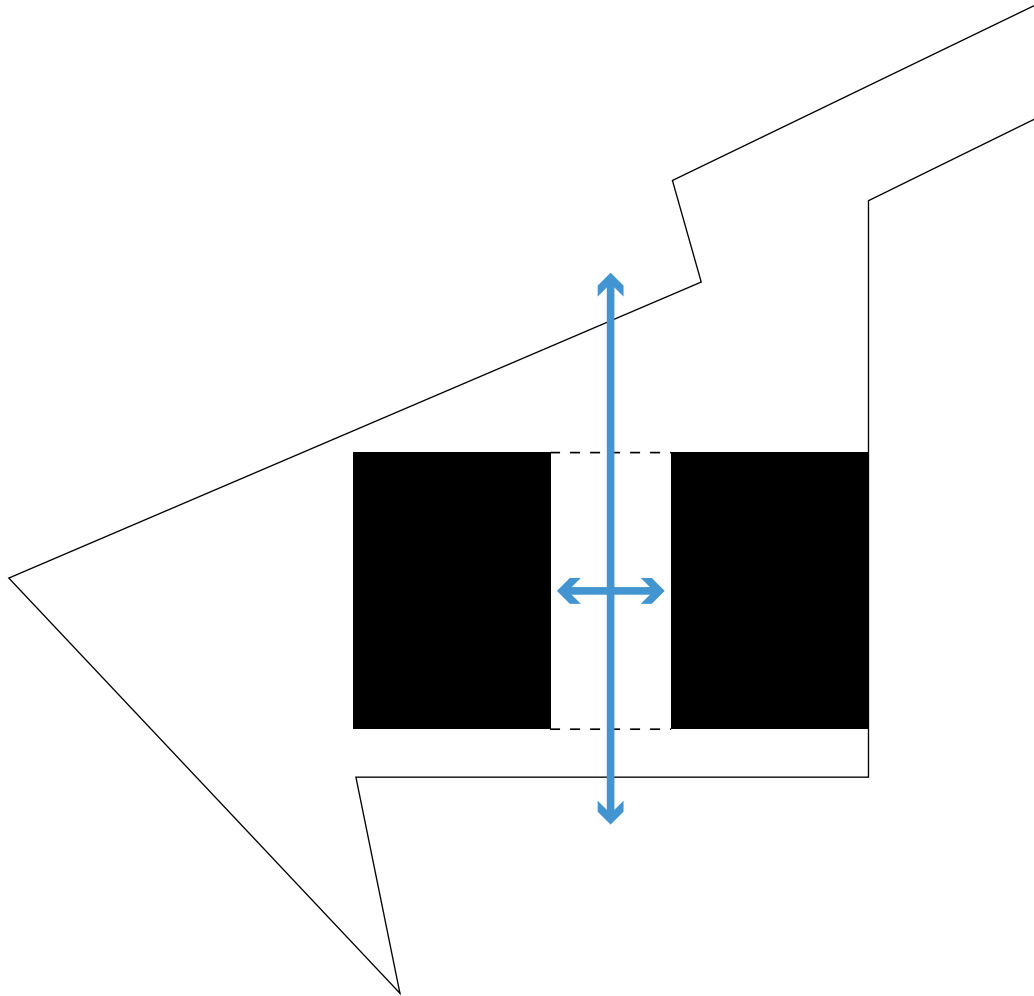
- 1. grotere schaal: lokale bedrijven 
- 2. kleine schaal: rijwoningen 
- 3. kleine schaal: villawijk 
- groene ruimte 
- verharde ruimte 

SITUERING

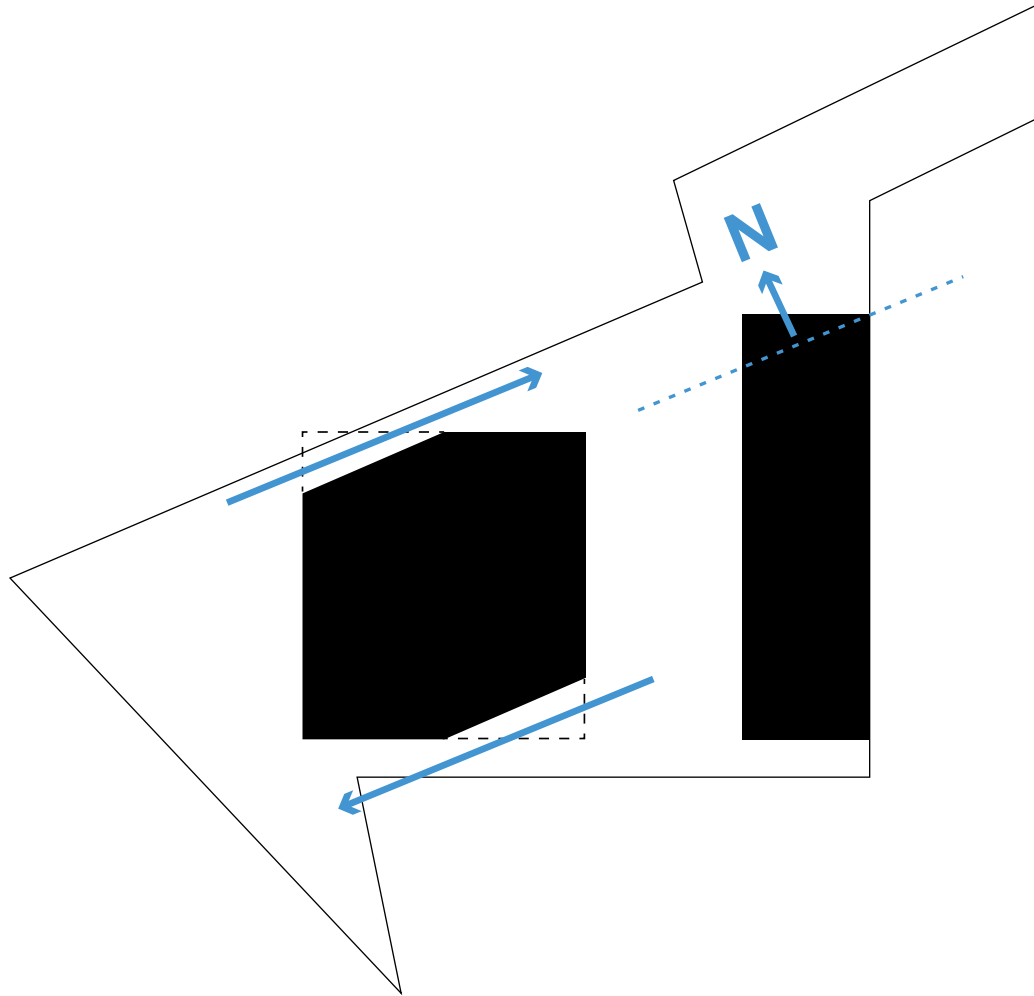




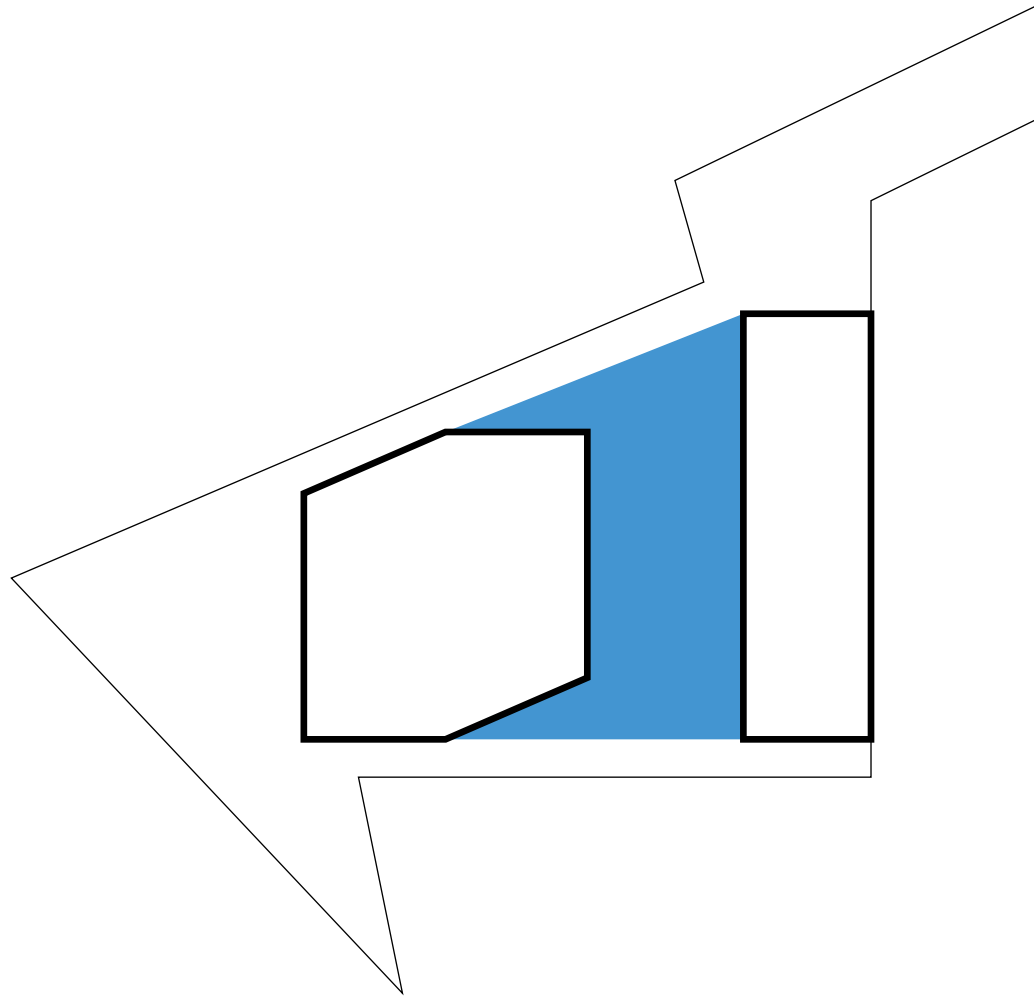
**BEDRIJFSVERZAMELGEBOUW**



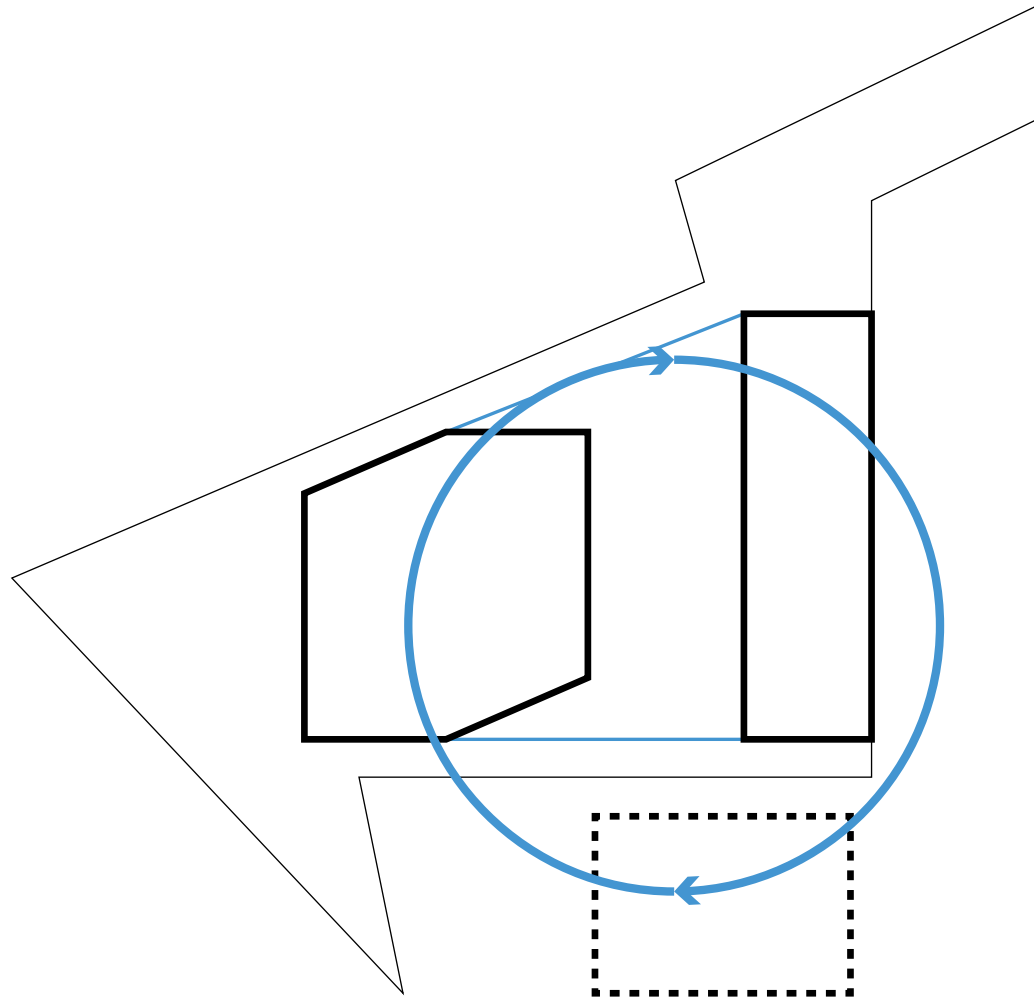
OPSPLITSEN



GEBOUW OP MAATWERK

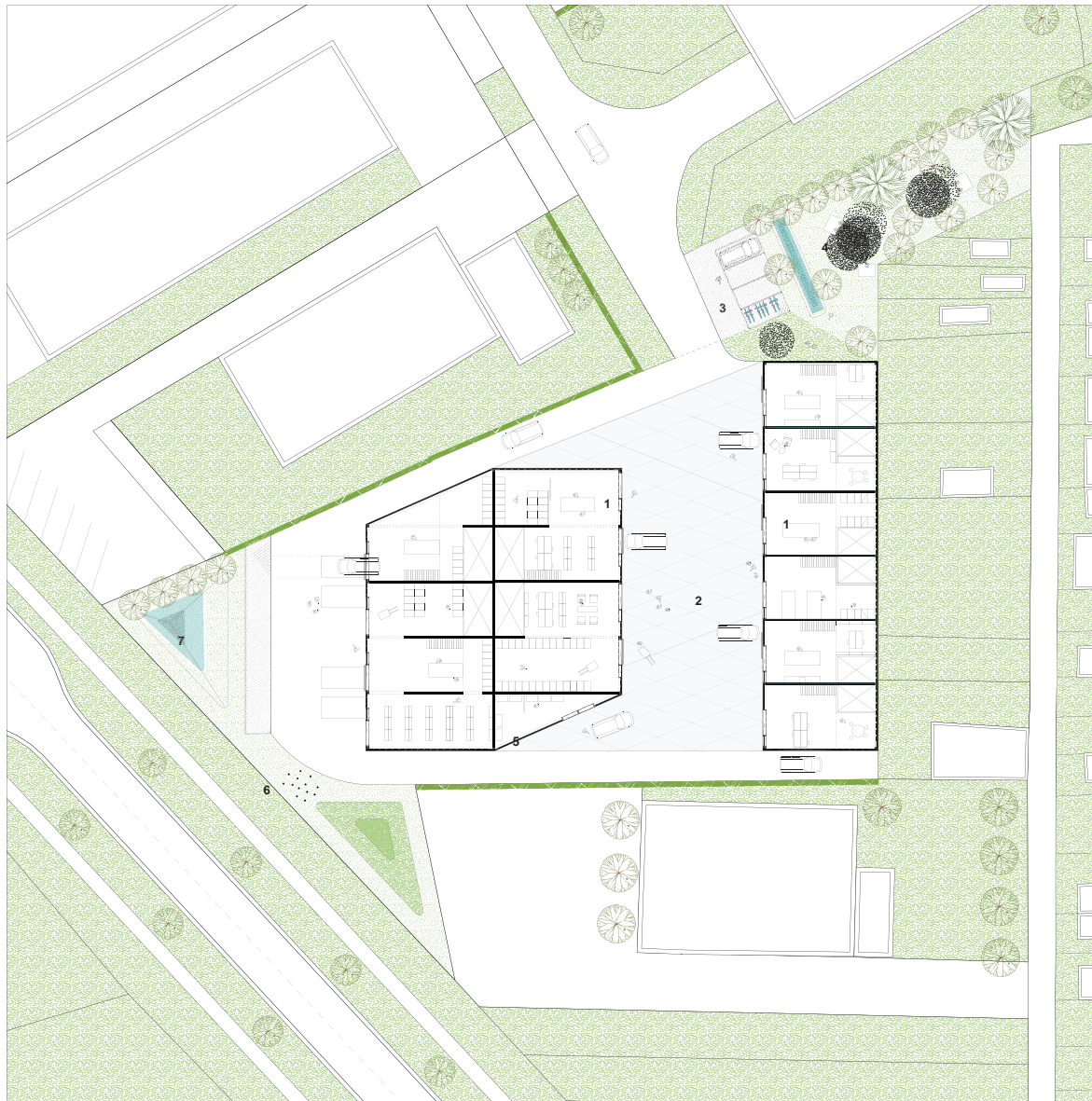


INTERACTIE DOOR COLLECTIEVE ZONE



3 ENTITEITEN





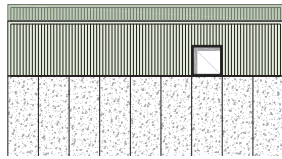
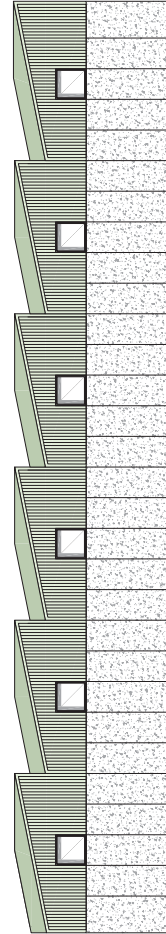
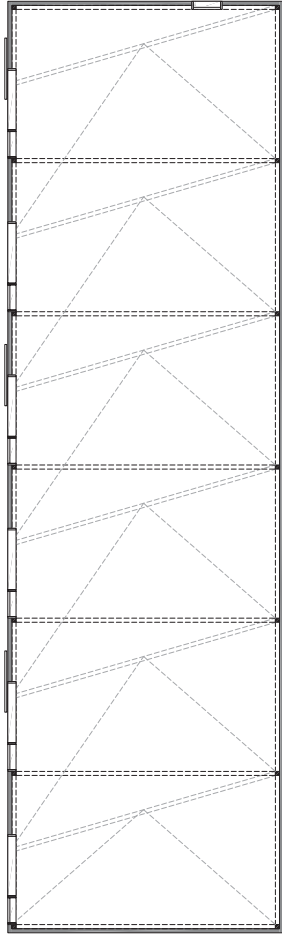
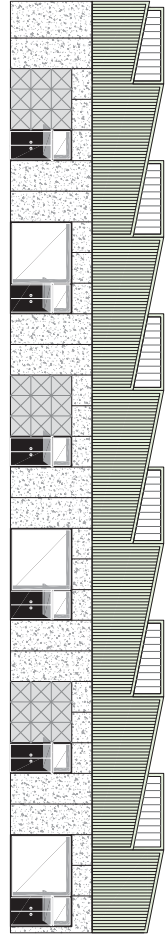
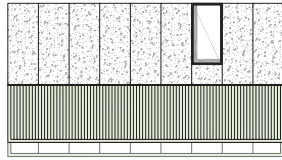
1. bedrijfsverzamelgebouw 2. collectief bedrijvenplein (laad- en loszone, bedrijfsparkeren) 3. bezoekersparkeren halfverhard (fiets / auto) 4. collectieve groenzone (picknick) 5. collectieve afvalsorteerzone 6. vlaggenbos 7. collectieve water-



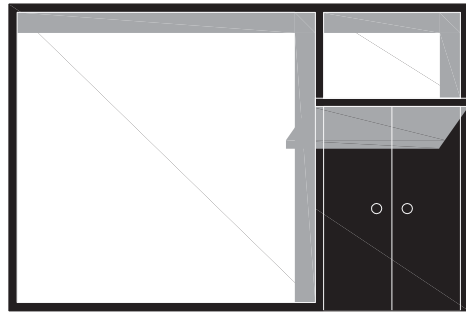
**INPLANTING / PROFIEL SNEDE**



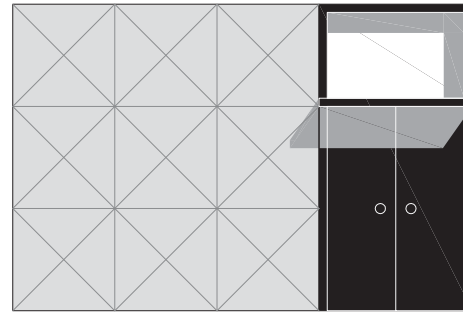
IMPRESSIE VAN HET COLLECTIEF BEDRIJVENPLEIN



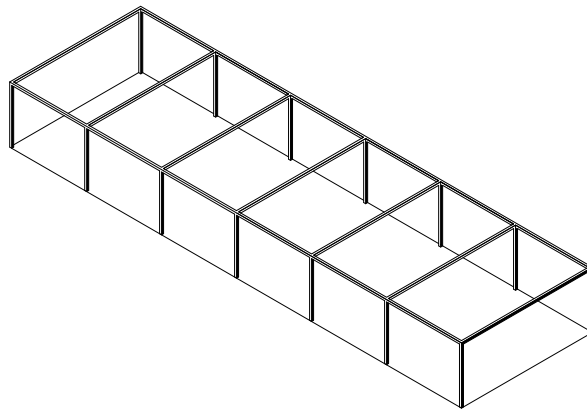
GEBOUW A



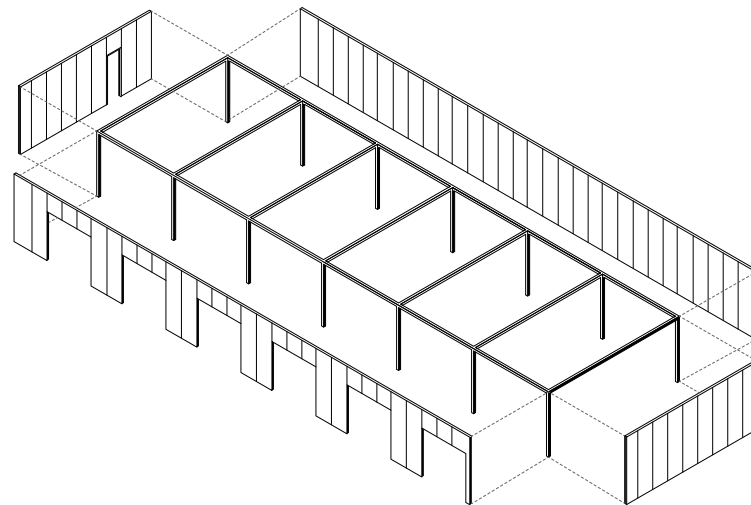
POORTTYPOLOGIE



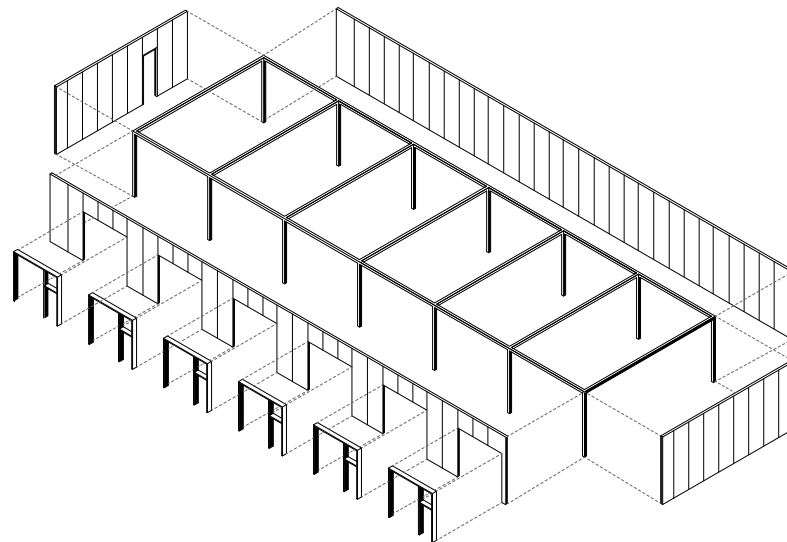
RAAMTYPOLOGIE



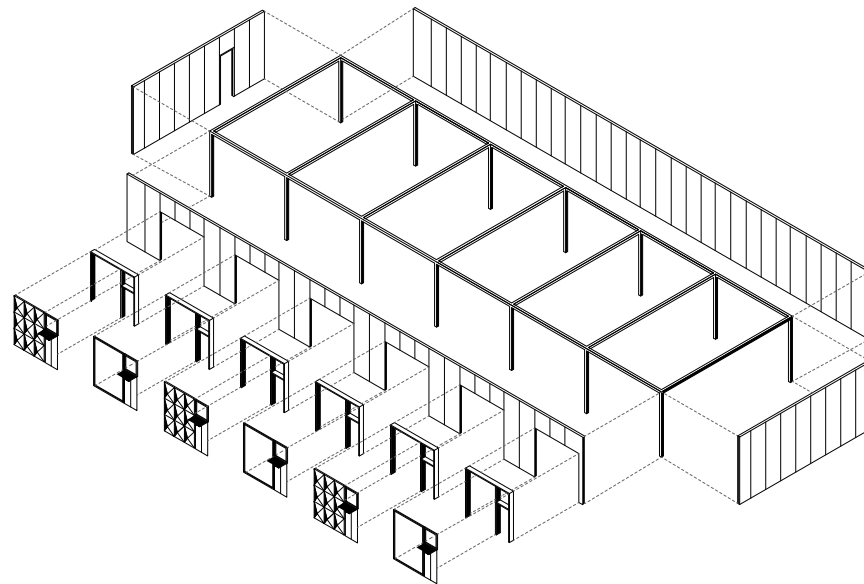
**DRAAGSTRUCTUUR**



**GEVEL**

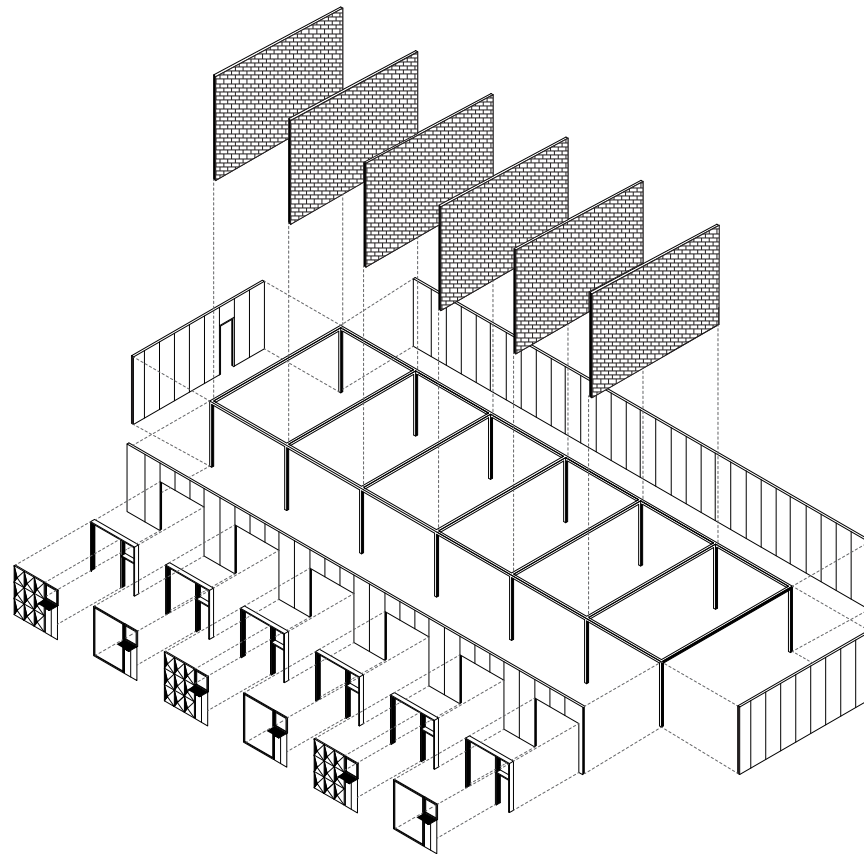


**GEVELOPENINGEN**

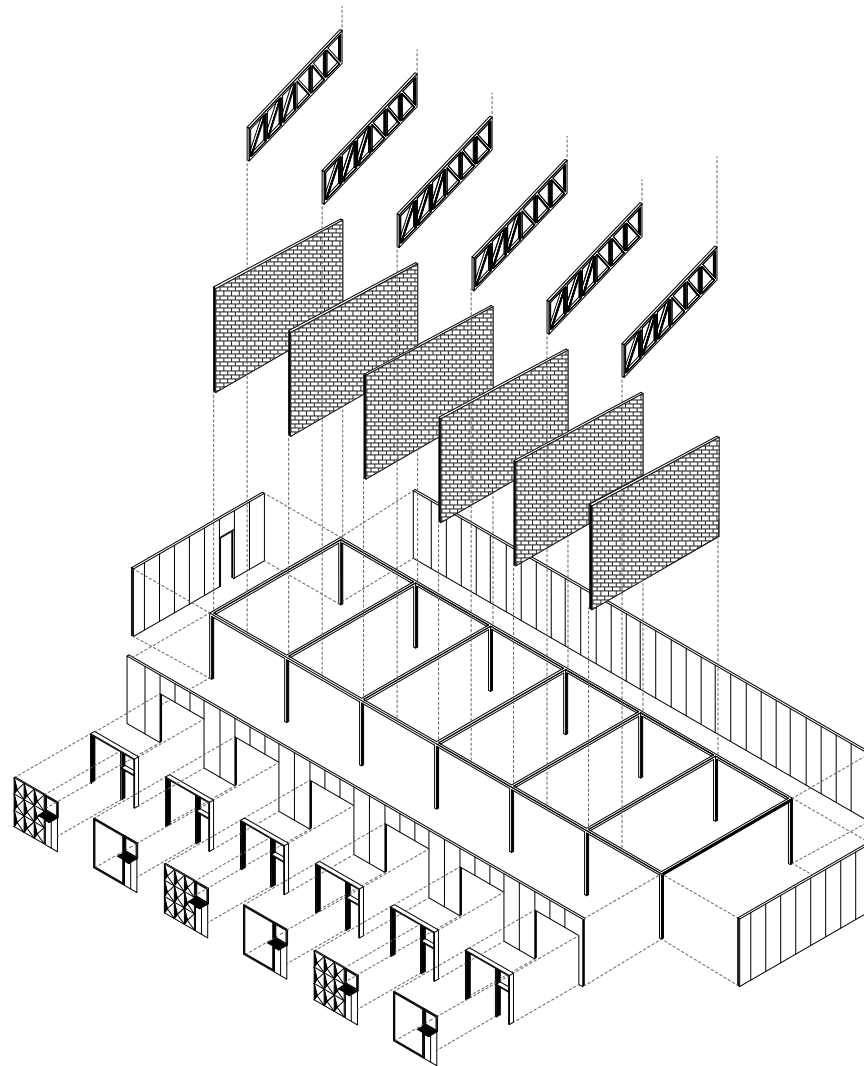


POORT- EN RAAMTYPOLOGIE

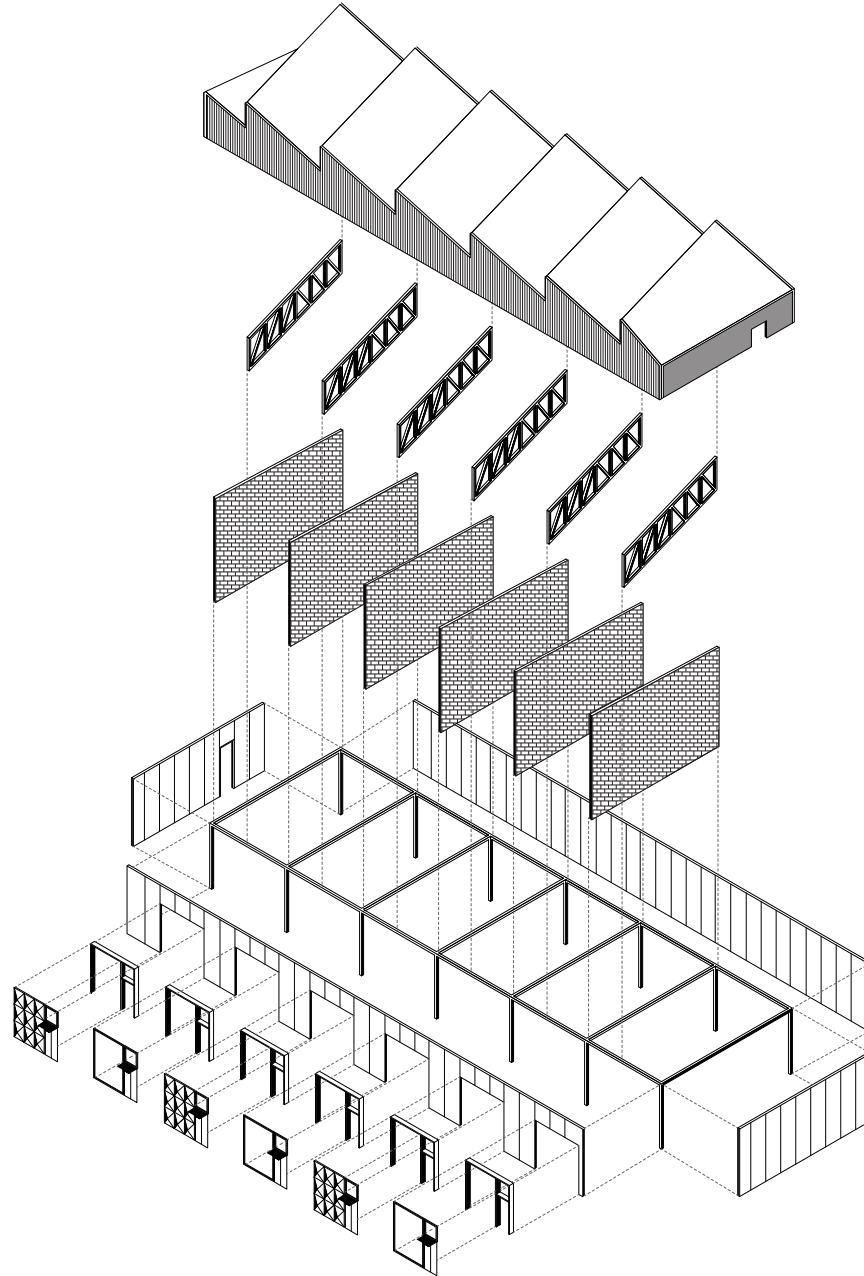




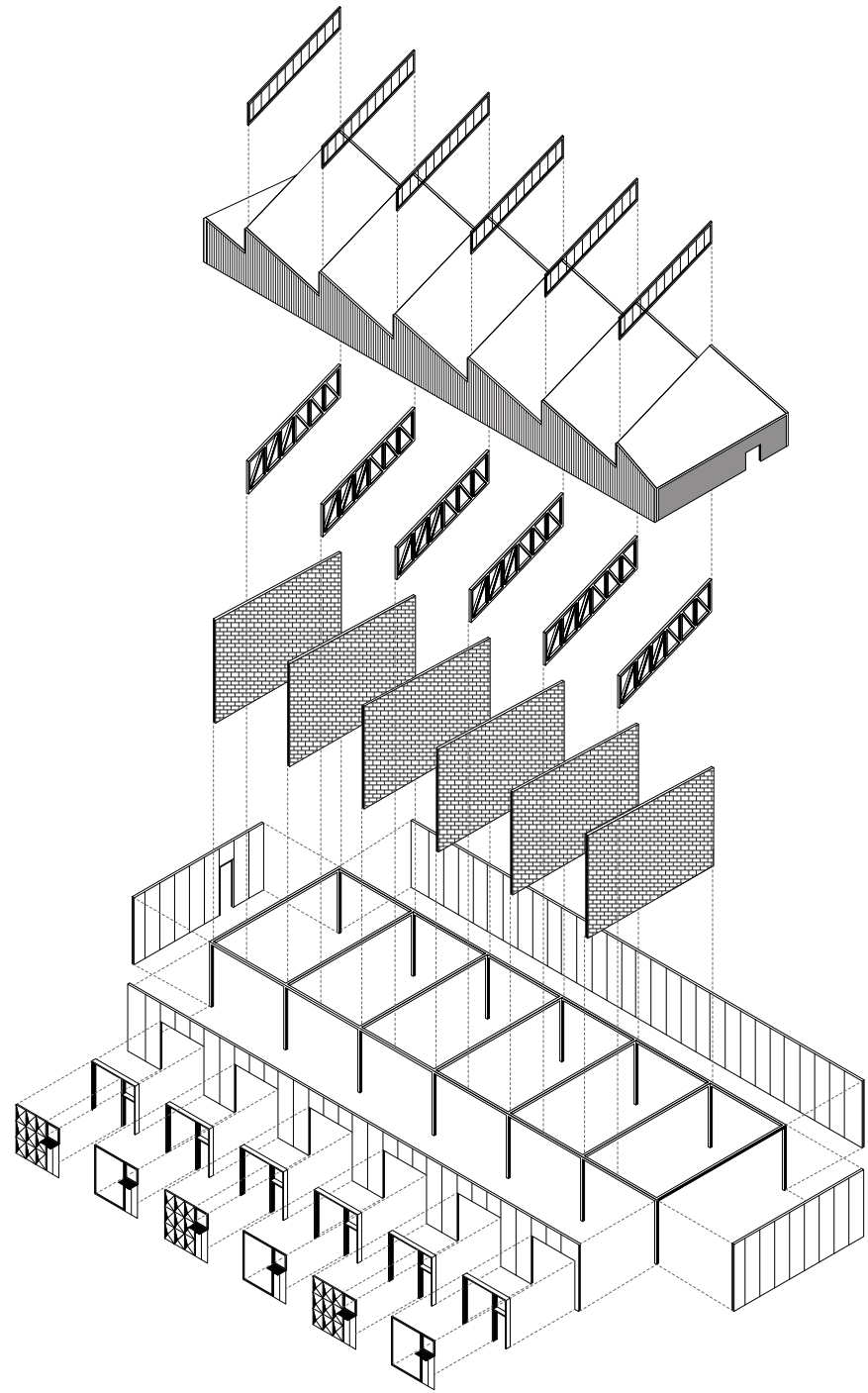
**FLEXIBILITEIT / MOGELIJKE SCHEIDINGSWANDEN**



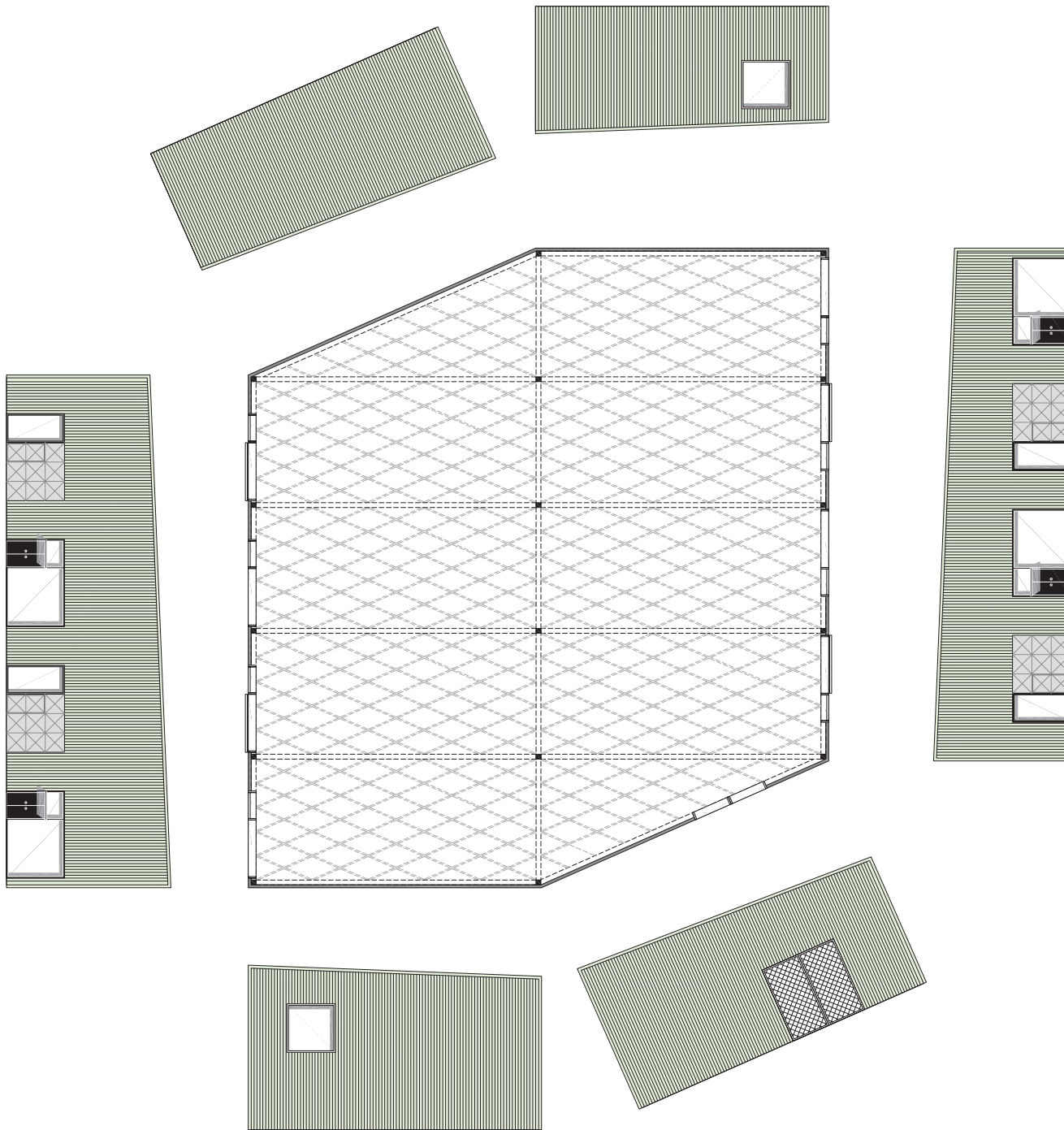
DAKSTRUCTUUR



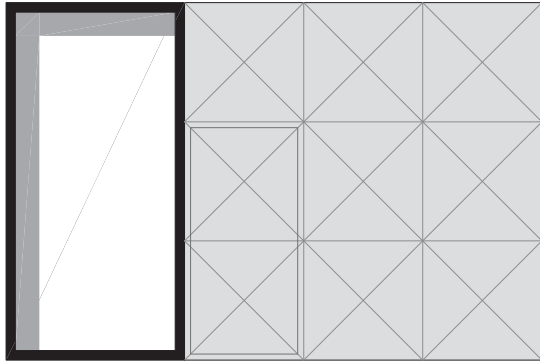
**SHEDDAKTYPLOGIE**



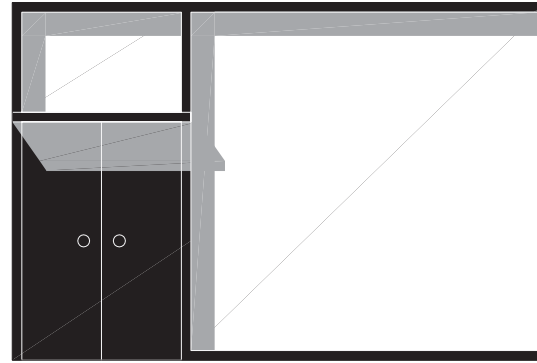
DAKLICHTEN



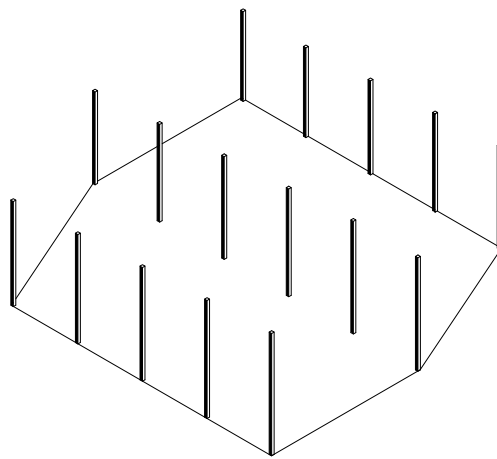
GEBOUW B



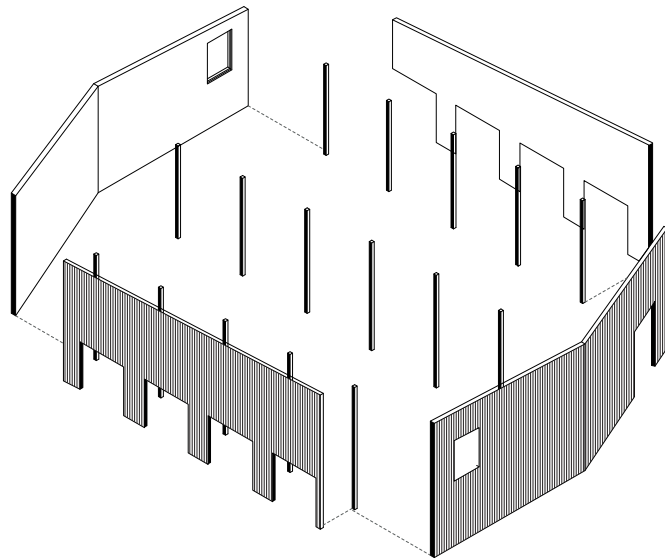
**POORTTYPOLOGIE**



**RAAMTYPOLOGIE**

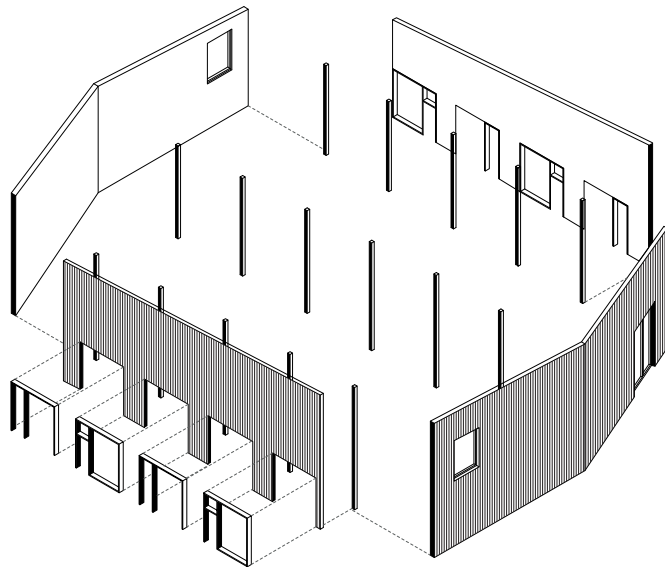


**DRAAGSTRUCTUUR**

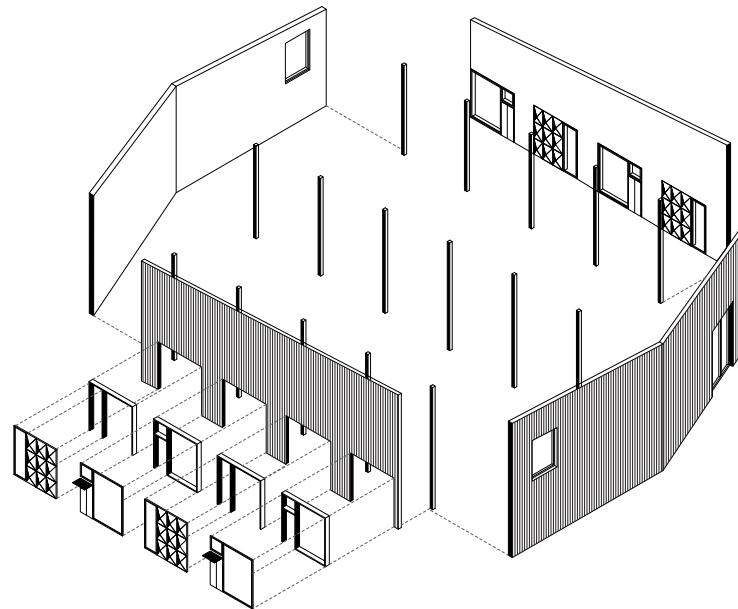


GEVEL

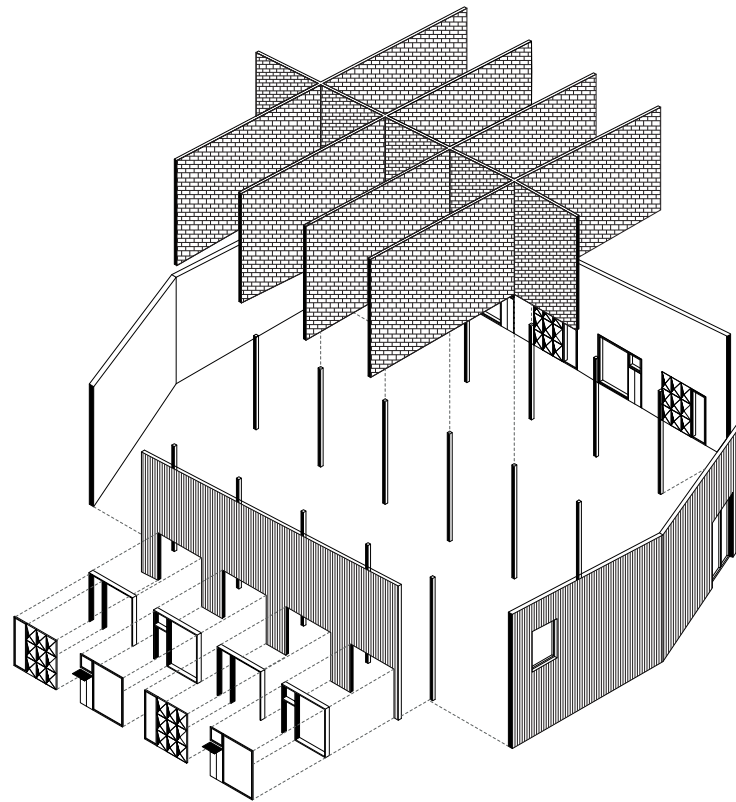




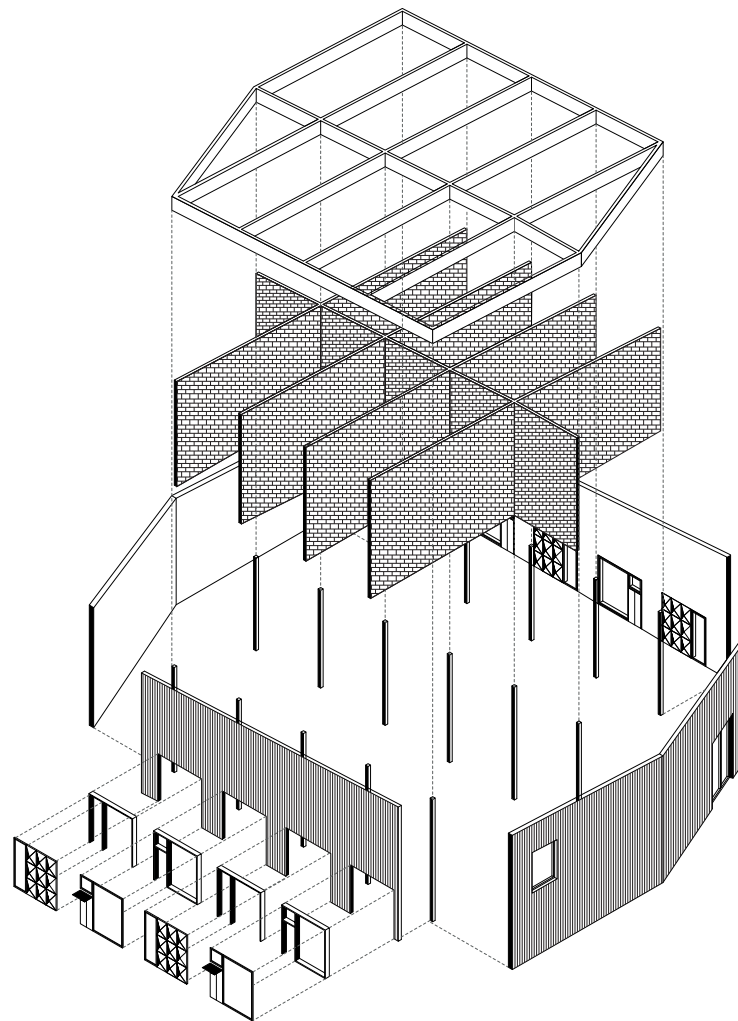
**GEVELOPENINGEN**



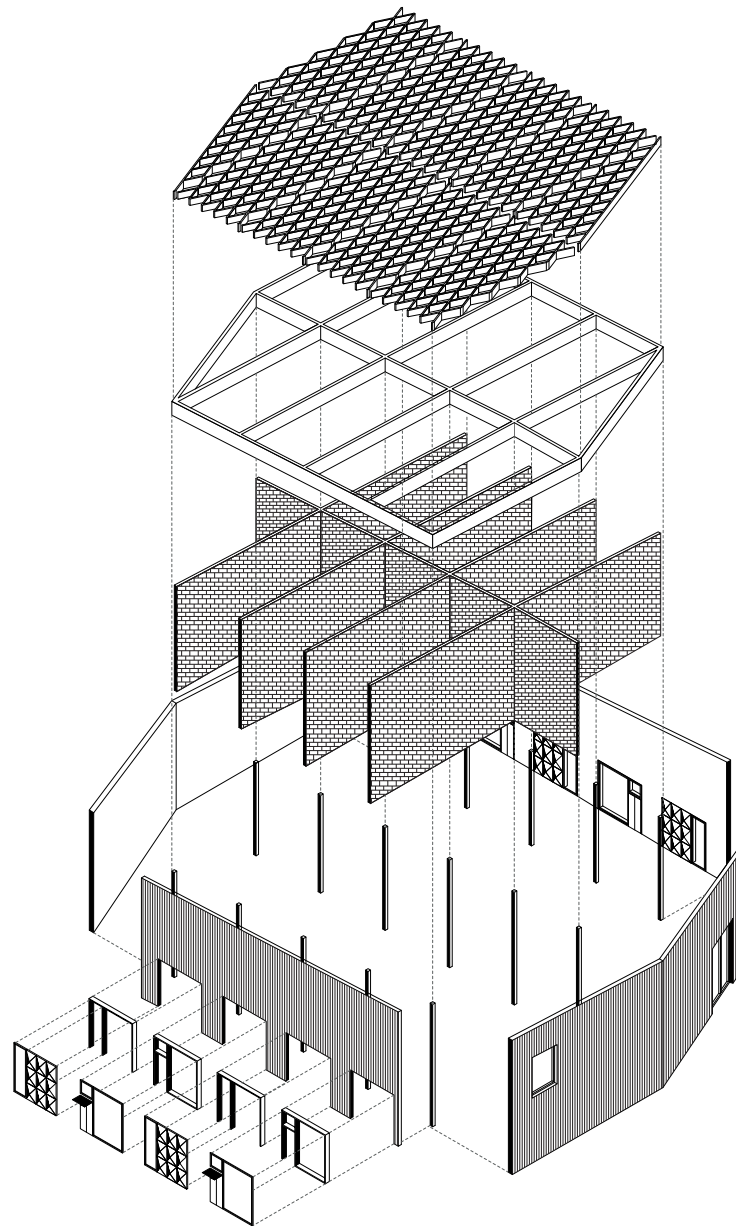
POORT-EN RAAMTYPOLOGIE



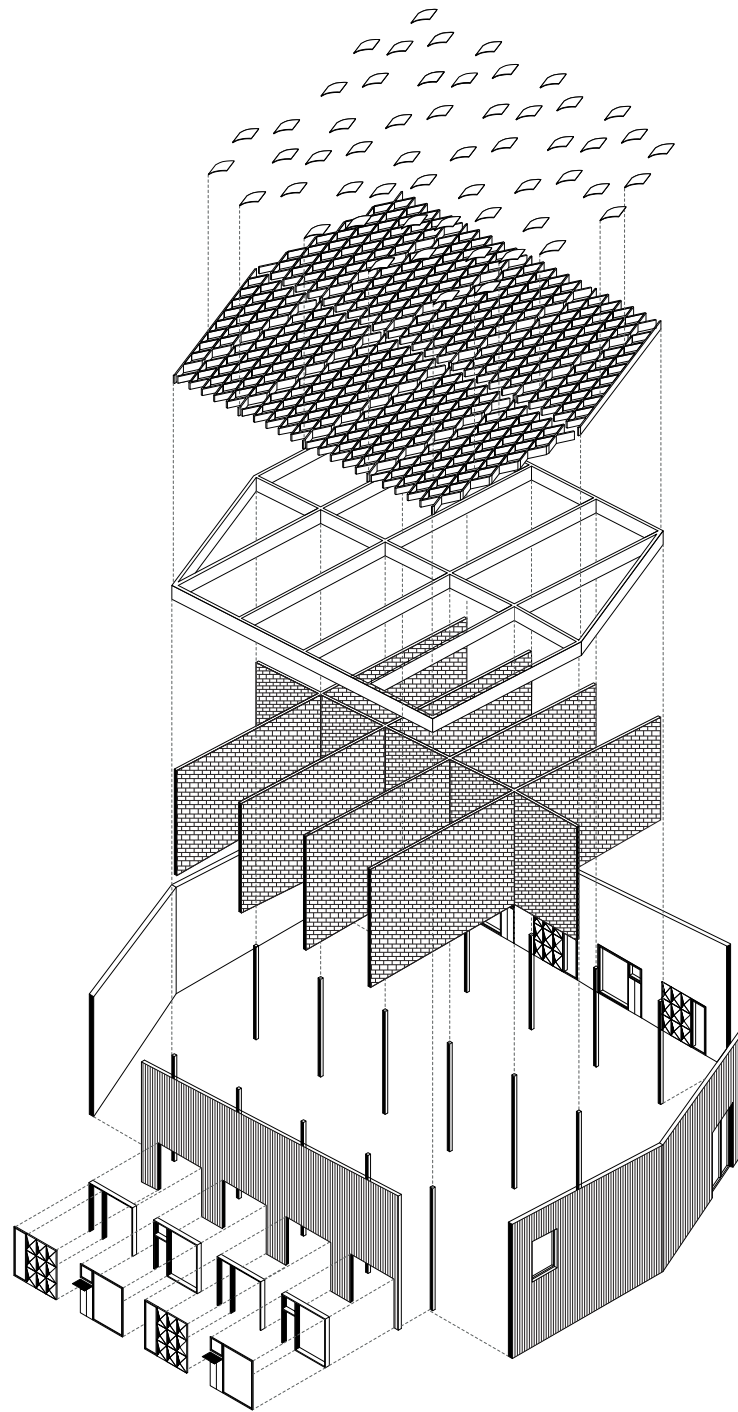
**FLEXIBILITEIT / MOGELIJKE SCHEIDINGSWANDEN**



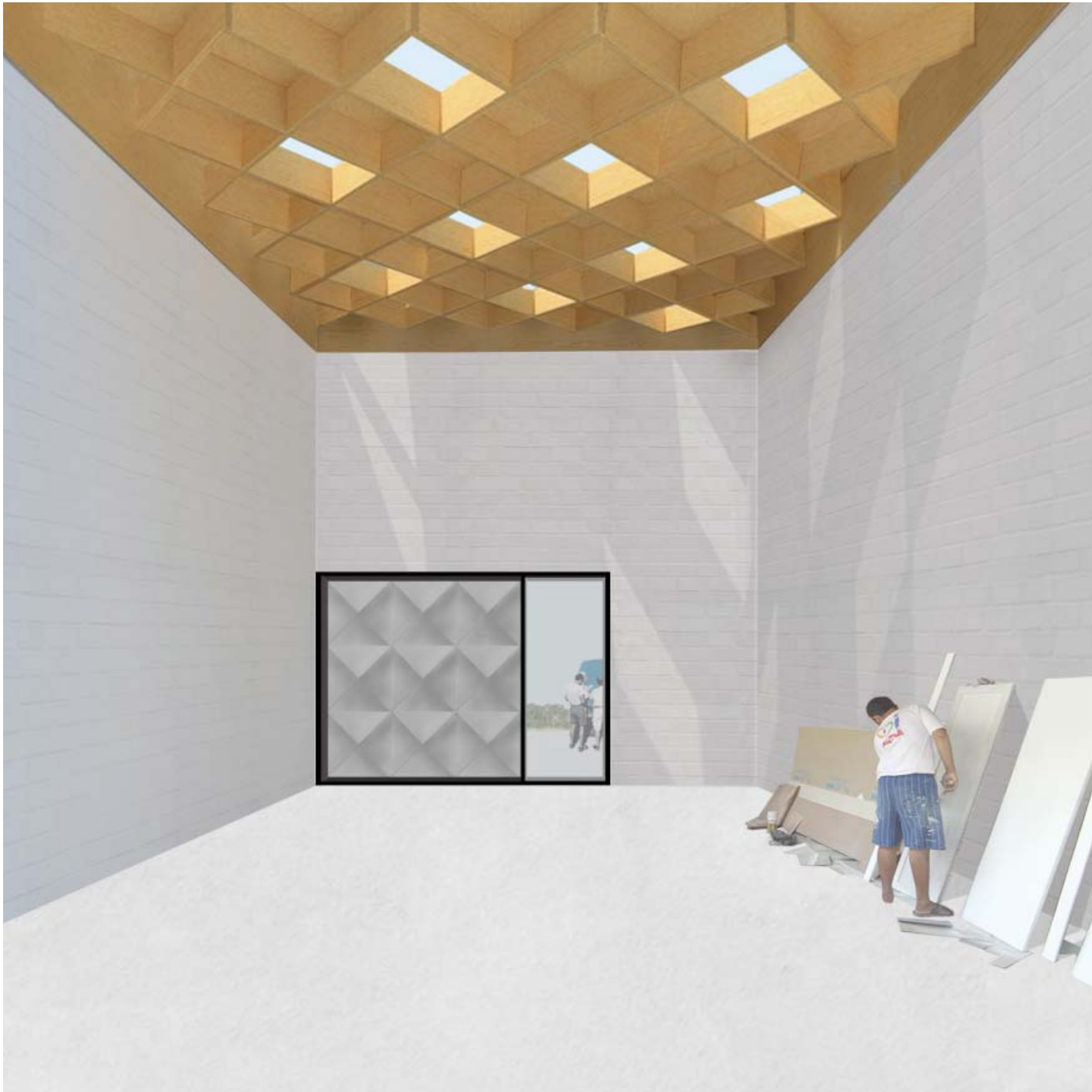
PRIMARIE DAKSTRUCTUUR



SECUNDARIE DAKSTRUCTUUR



DAKLICHTEN

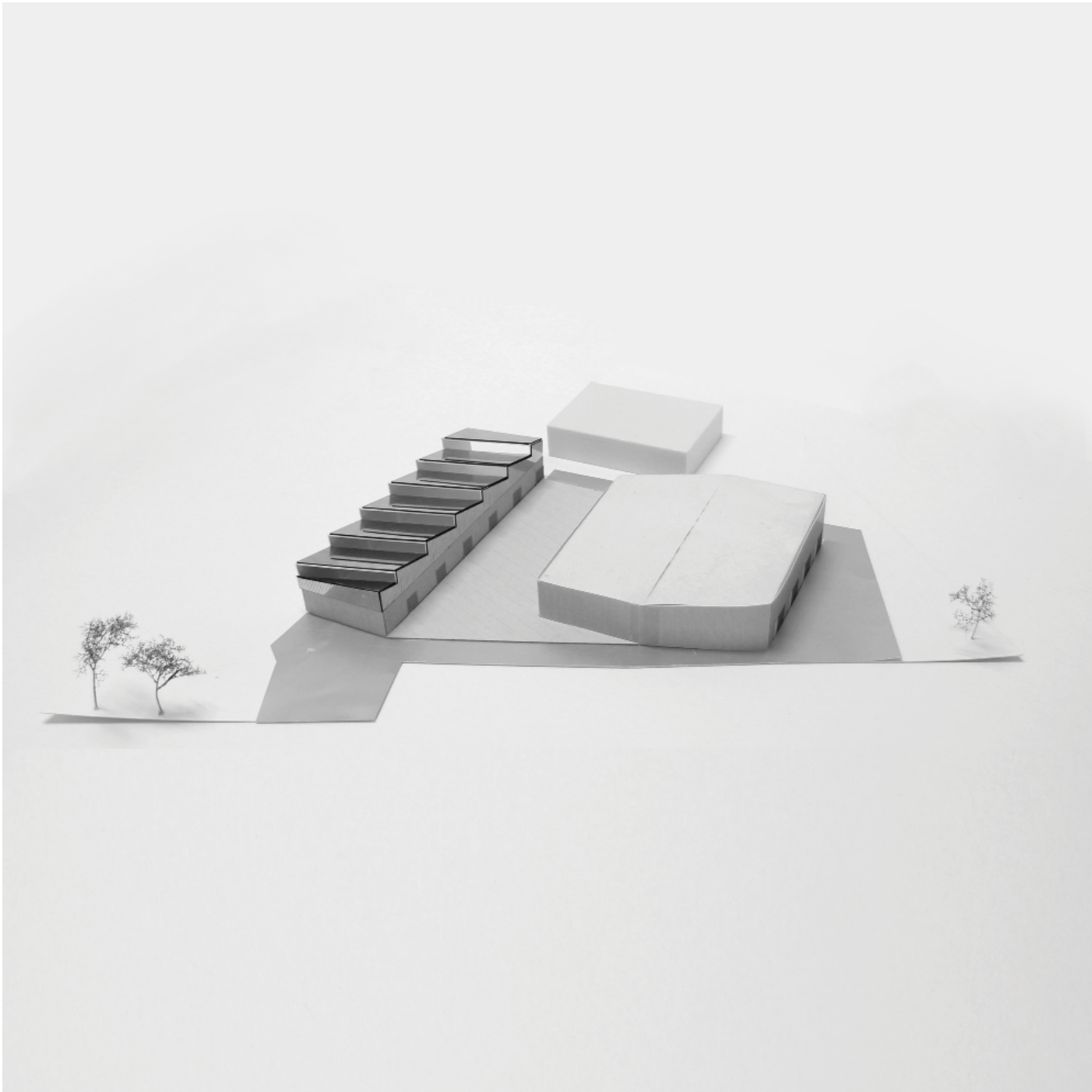


IMPRESSIE VAN EEN ENKELE MODULE

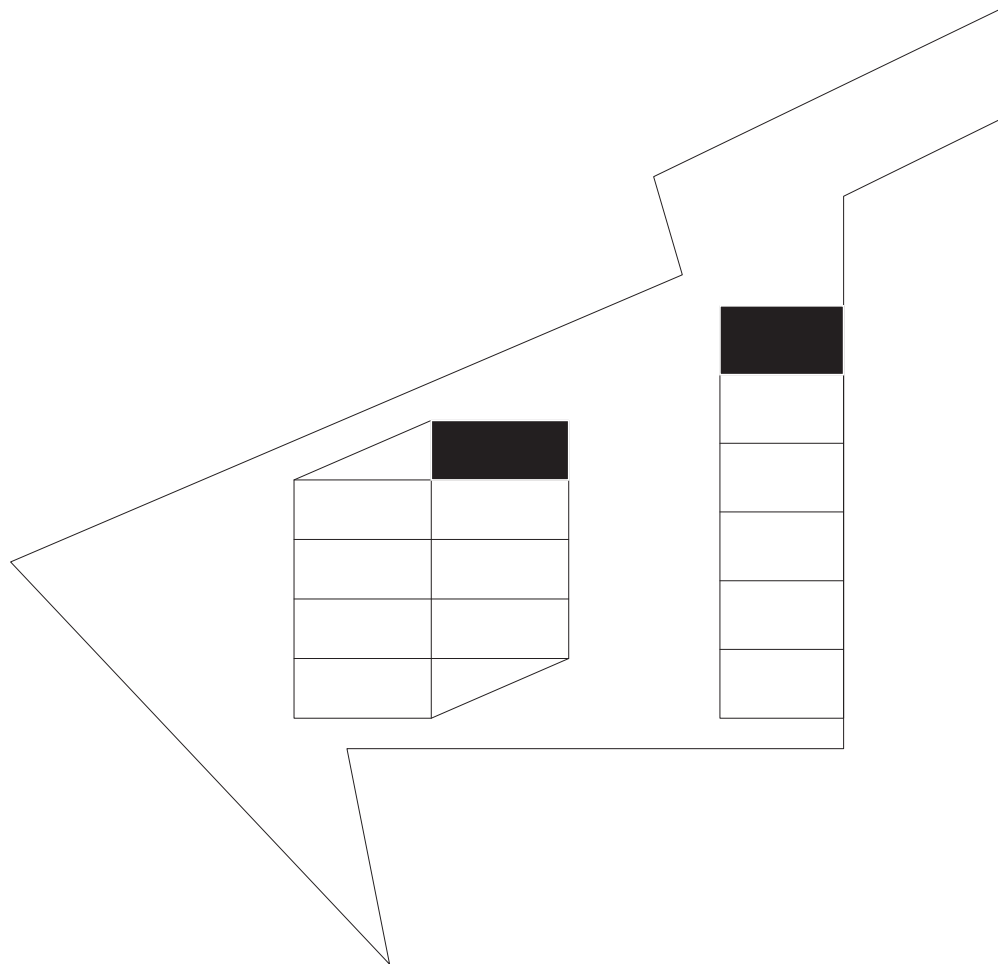


IMPRESSIE VANAF DE RINGLAAN

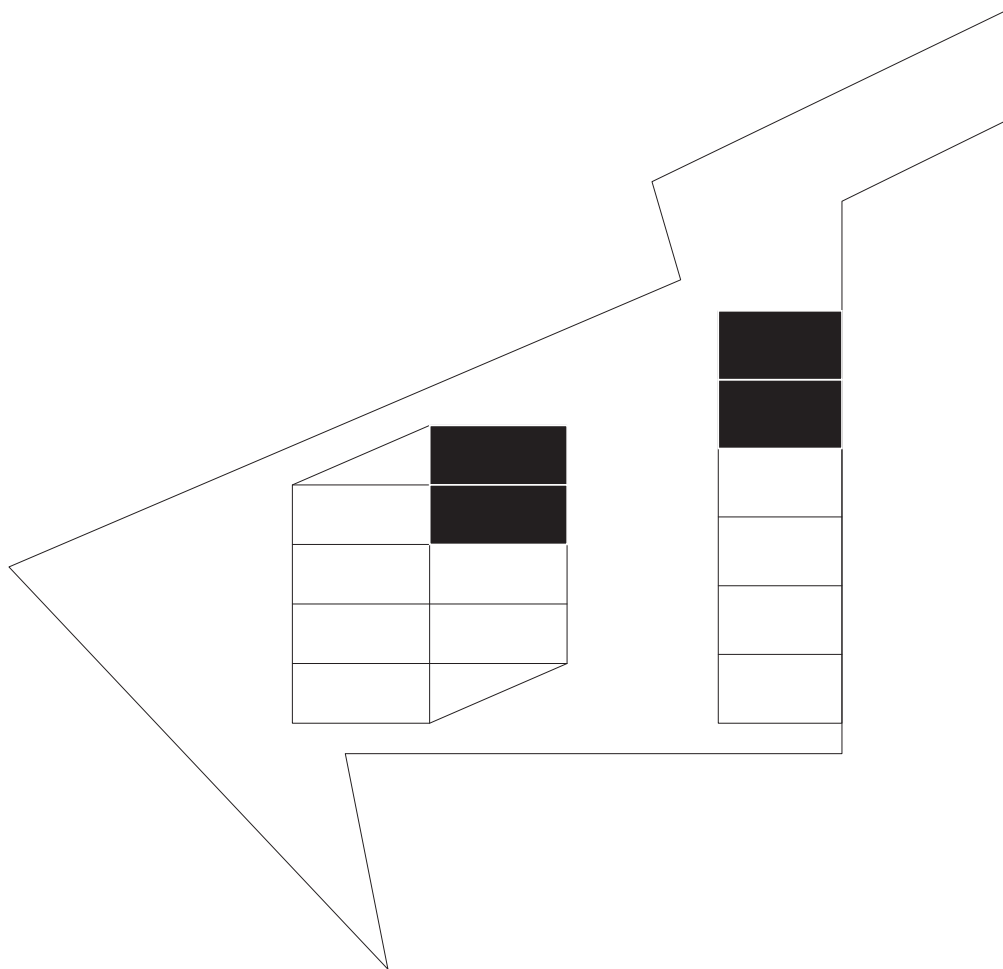


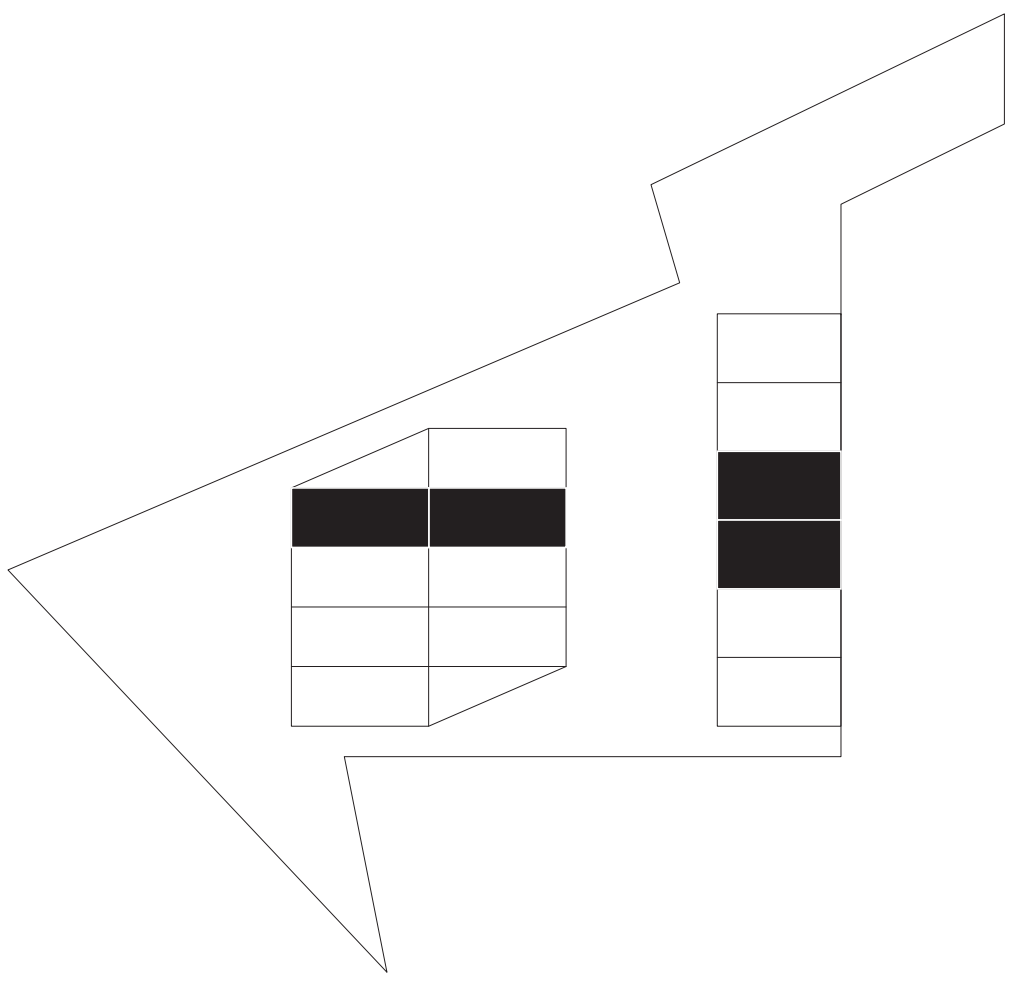


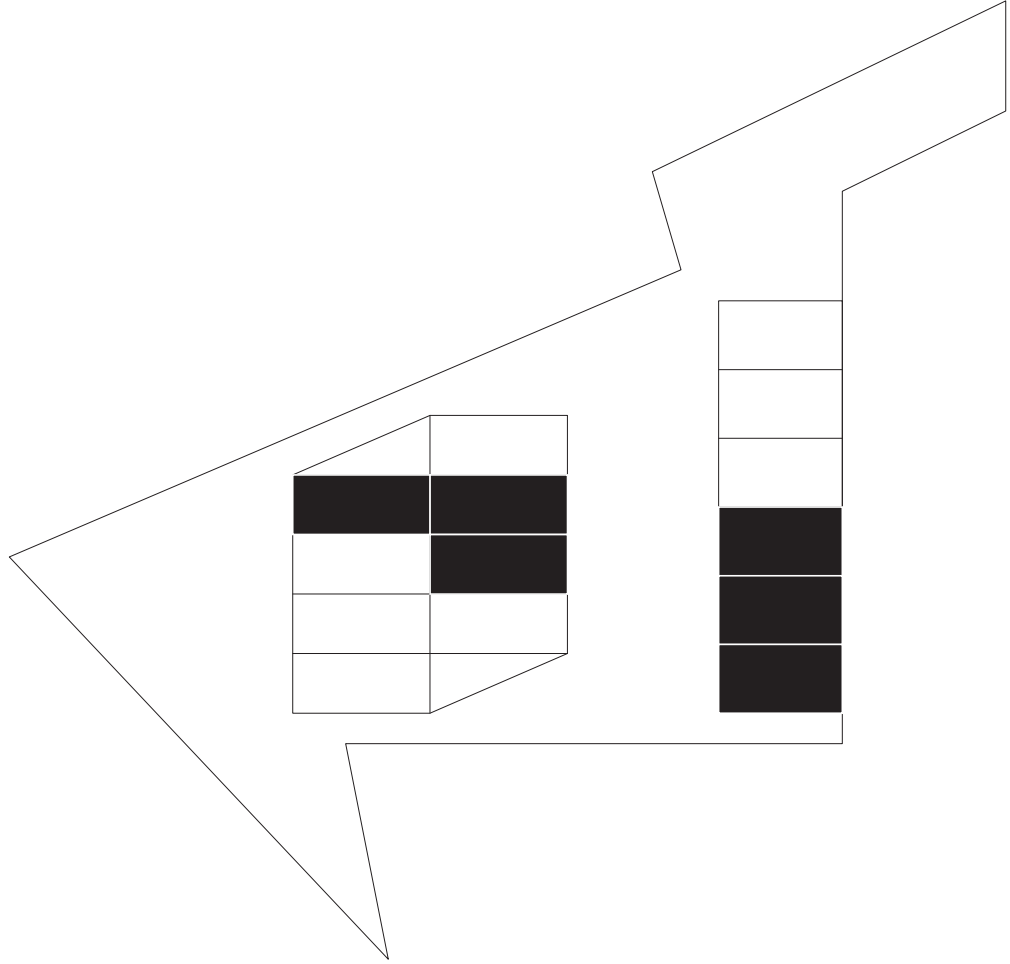
MAQUETTE

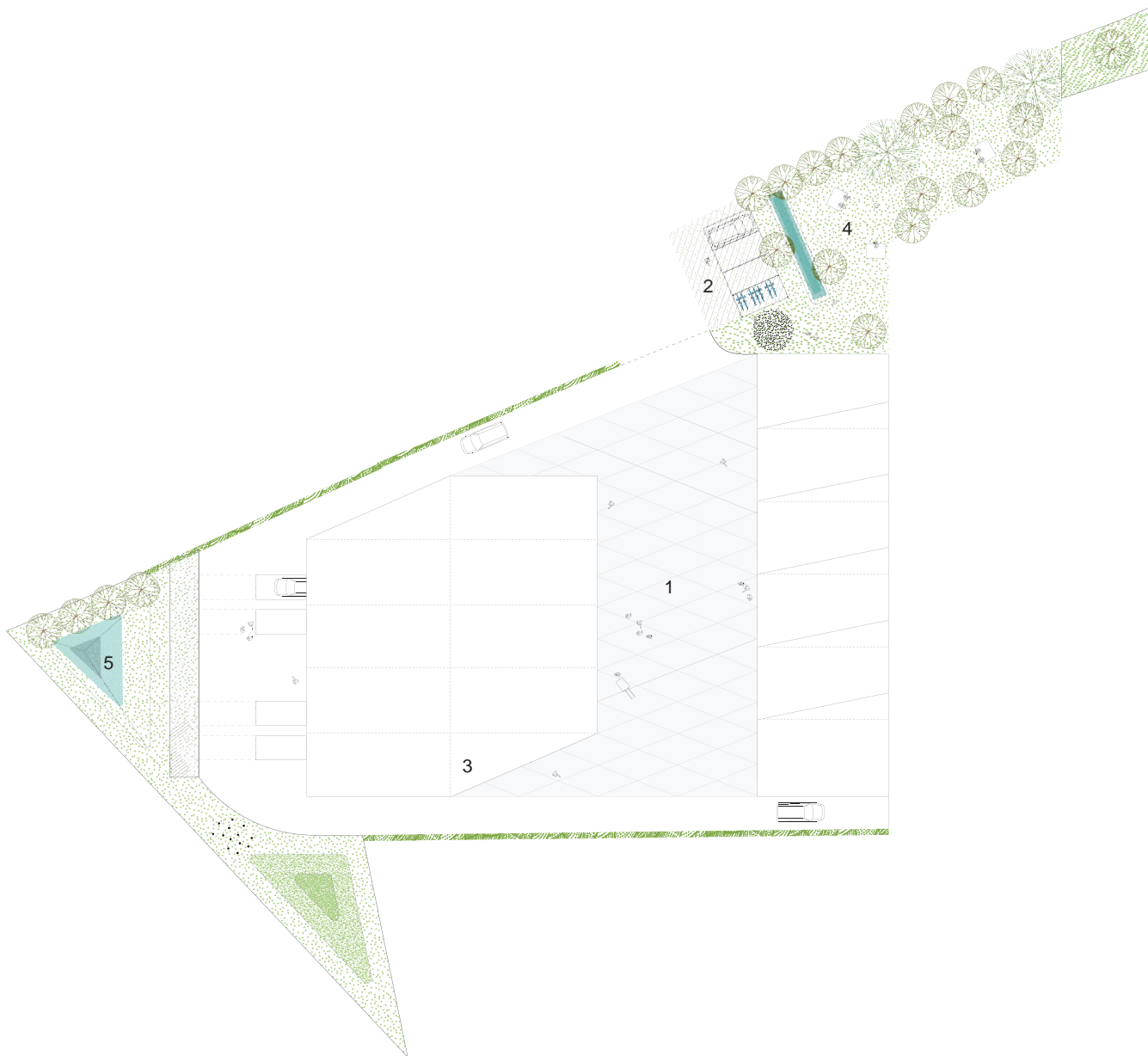


**FLEXIBILITEIT**



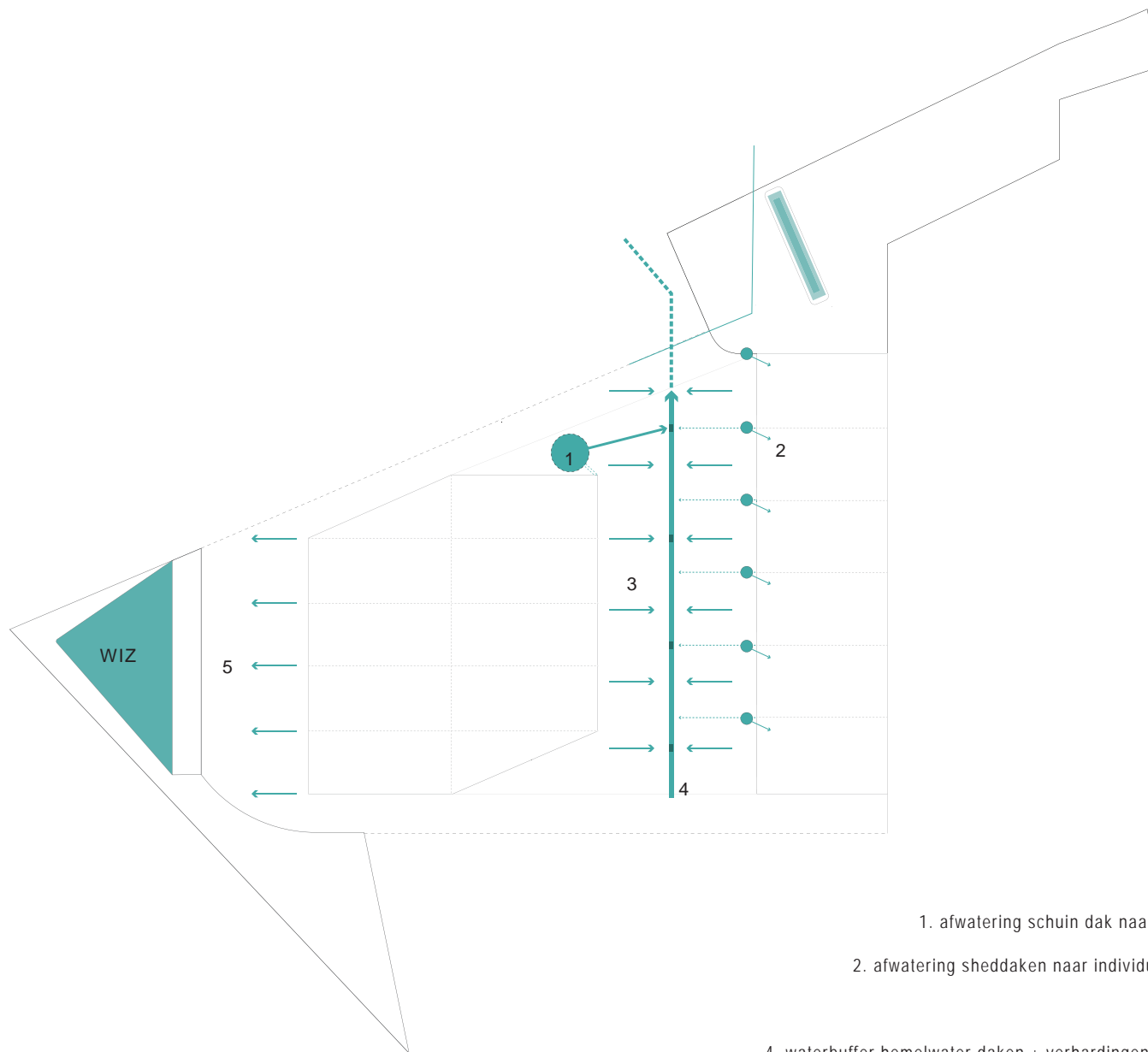






- 1. bedrijfsvlein
- 2. (bezoekers)parkeren
- 3. afvalsorteerplaats
- 4. groenzone
- 5. waterbuffer

**COLLECTIVITEITSSHEMA**



1. afwatering schuin dak naar regenwaterput: mogelijkheid collectieve carwash

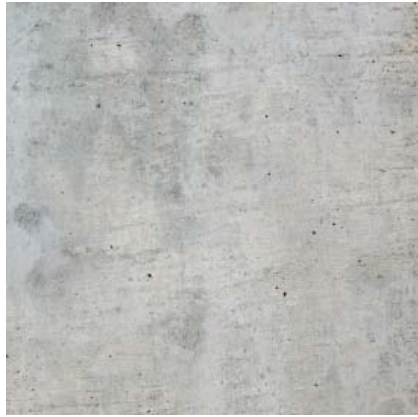
2. afwatering sheddaken naar individuele citerne: mogelijkheid hergebruik voor sanitair

3. afwatering verhardingen 1,5% naar bufferbuis

4. waterbuffer hemelwater daken + verhardingen naar overgedimensioneerde buis met knijpleiding

5. afwatering verhardingen 1,5% richting waterinfiltratiezone (WIZ)

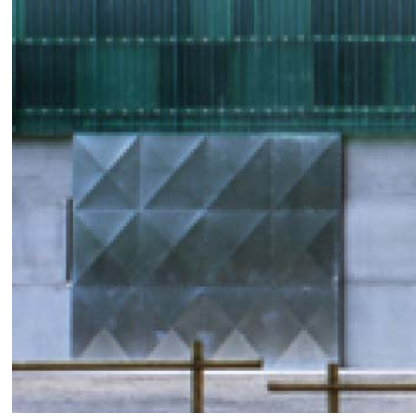
**WATERSHEMA**



1. betonpanelen



2. geprofileerde aluminium gevelpanelen



3. aluminium poorten



**MATERIALITEIT-SFEER**





contrastwerking: donkere asfaltverharding vs licht betonplein



groenaanleg: grasheuvels en verticale hoogstammen



zaagsnedepatroon licht betonplein



grasheuvels



collectieve picknickbanken



halfverharding parkeren

## MATERIALITEIT-SFEER





**KAU** gymnasium Ukkel 2013 **URA** i.s.m. **UTIL**



**PZE** polyvalent zaal Eeklo 2007 **URA**



**KOP** loods met kantoren Puurs 2010 **URA**



**GAV** watersportgebouw Harelbeke 2014 **URA** i.s.m. **LANDINZICHT**

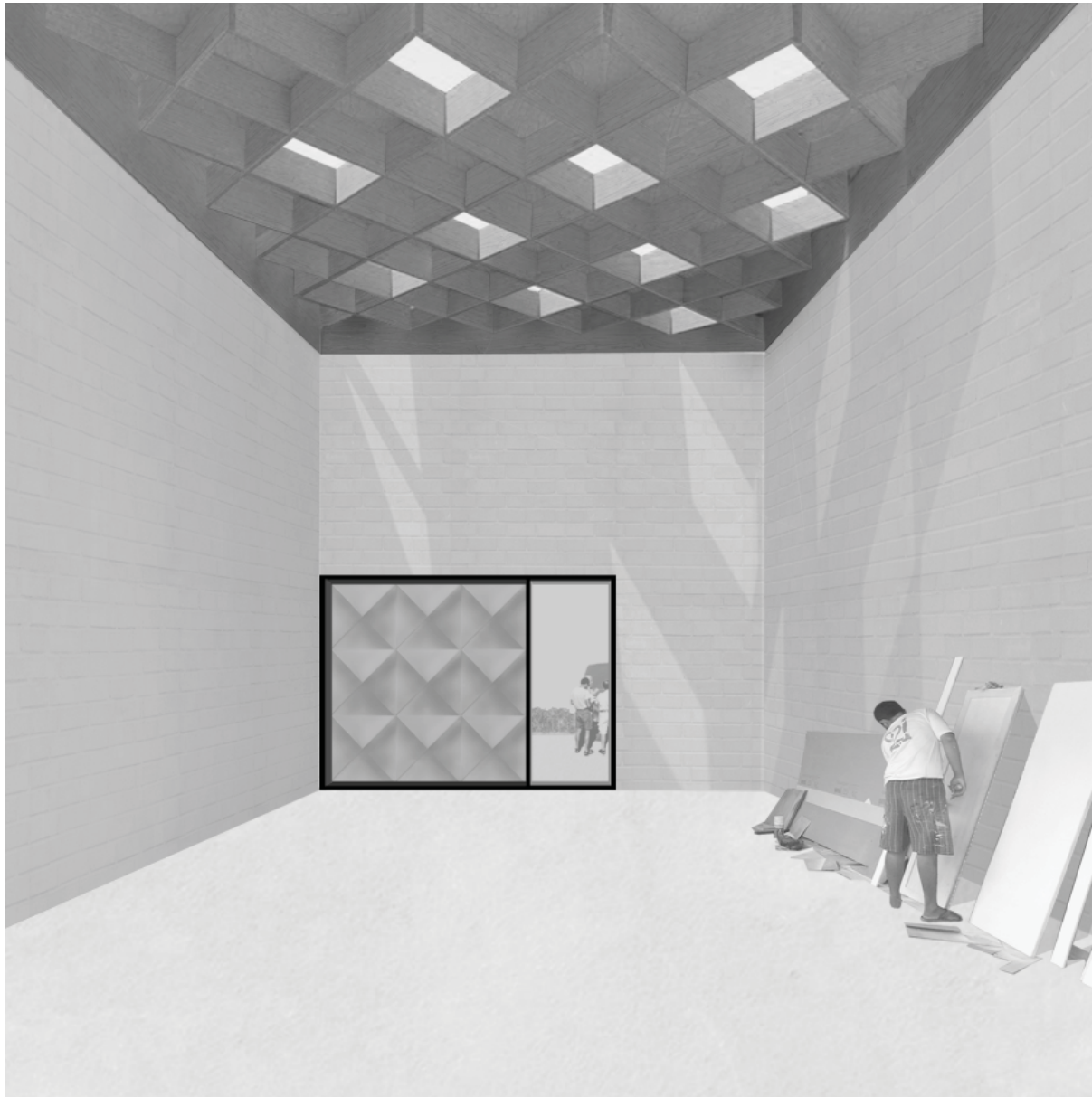
**VOORSTEL TIMING OPDRACHT**

Project :                   Bedrijfsverzamelgebouwen Ingelmunster  
 Bouwheer :               WVI (West-Vlaamse Intercommunale)

	jaar maand	1												2											
		1	2	3	4	5	6	7	8	9	10	11	12	1	2	3	4	5	6	7	8	9	10	11	12
<b>nieuwbouw</b>																									
voorontwerpdossier			start		goedkeuring																				
bouwaanvraag				indienen		vergunning																			
aanbestedingsdossier					start		publi	gunning																	
uitvoering 180 werkdagen										start															oplevering
<b>omgeving</b>																									
voorontwerpdossier								start		goedkeuring															
aanbestedingsdossier											start					publi	gunning								
uitvoering 80 werkdagen																		start							oplevering







**BEDRIJVENTERREIN INGELMUNSTER**

URA  
UTIL  
LANDZICHT